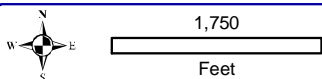
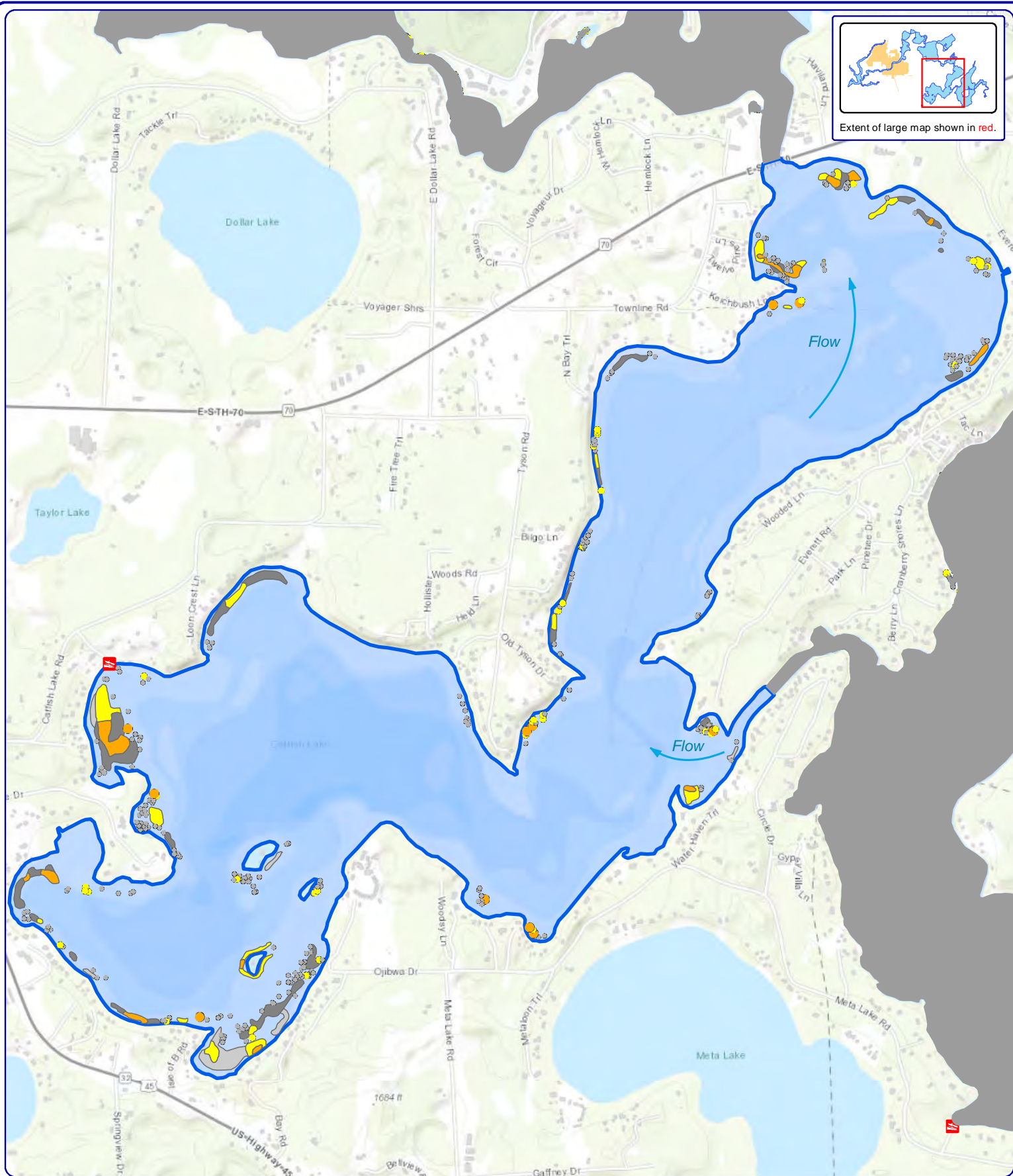


Extent of large map shown in red.



Onterra LLC
 Lake Management Planning
 815 Prosper Road
 De Pere, WI 54115
 920.338.8860
 www.onterra-eco.com

Sources:
 Basemap: ESRI
 Orthophotography: WDNR, 2022
 Bathymetry: WDNR, Onterra digitized
 Aquatic Plant Survey: Onterra, 2024
 Map Date: October 14, 2024 - RMF

Legend

- EWM Survey Results (September 18-20, 2024)**
- Highly Scattered
 - Dominant
 - Highly Dominant
 - Surface Matting (None)
 - Single or Few Plants
 - Clumps of Plants
 - Small Plant Colony

Catfish Lake
 Vilas County, Wisconsin
Late-Season 2024
EWM Survey Results