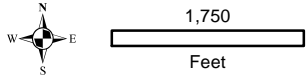
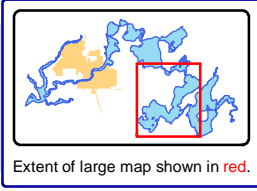
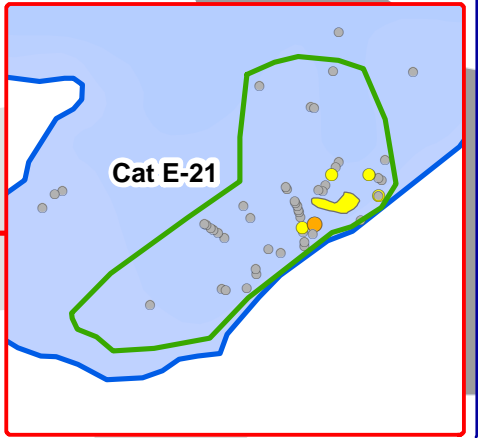
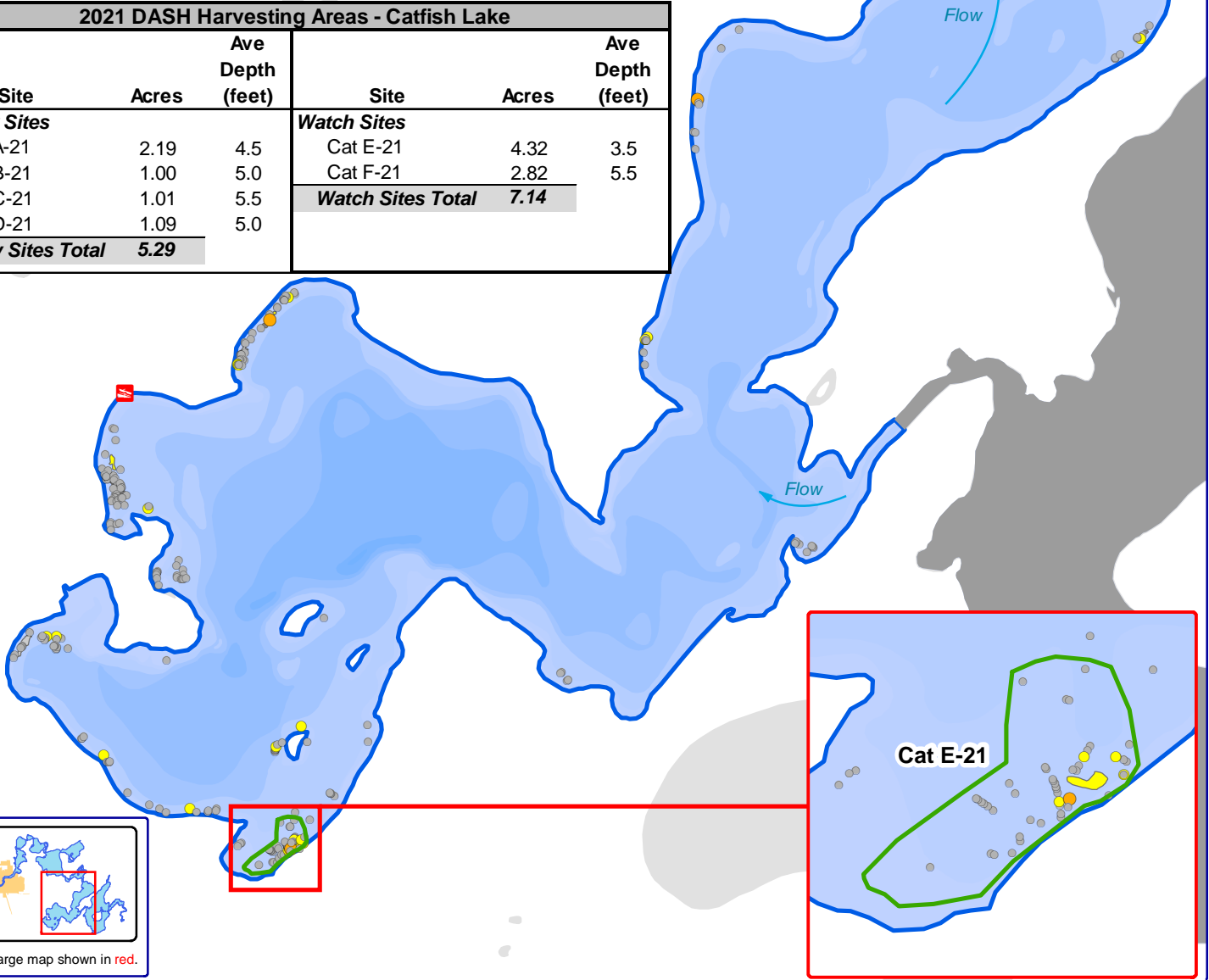


2021 DASH Harvesting Areas - Catfish Lake				
Site	Acres	Ave Depth (feet)	Site	Ave Depth (feet)
<b>Primary Sites</b>			<b>Watch Sites</b>	
Cat A-21	2.19	4.5	Cat E-21	3.5
Cat B-21	1.00	5.0	Cat F-21	5.5
Cat C-21	1.01	5.5	<b>Watch Sites Total</b>	<b>7.14</b>
Cat D-21	1.09	5.0		
<b>Primary Sites Total</b>	<b>5.29</b>			



**Onterra LLC**  
 Lake Management Planning  
 815 Prosper Road  
 De Pere, WI 54115  
 920.338.8860  
 www.onterra-eco.com

Sources:  
 Roads and Hydro: WDNR  
 Bathymetry: WDNR, Onterra digitized  
 Aquatic Plants: Onterra, 2021  
 Map Date: July 29, 2021 HAL  
 Filename: Catfish\_EWM\_ESAIS\_DASH\_June21.mxd

- Legend**  
**2021 ESAIS Survey (Late-June 2021)**
- Highly Scattered
  - Scattered
  - Dominant
  - Highly Dominant
  - Surface Matting
  - Single or Few Plants
  - Clumps of Plants
  - Small Plant Colony
  - 2021 Primary DASH Site
  - 2021 DASH Watch Site

**Catfish Lake**  
 Vilas County, Wisconsin  
**2021 ESAIS EWM**  
**Survey Results &**  
**DASH Sites**