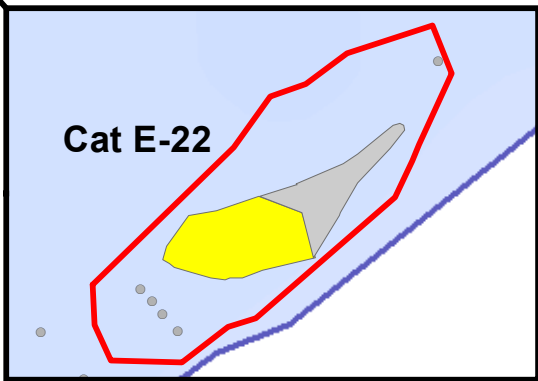
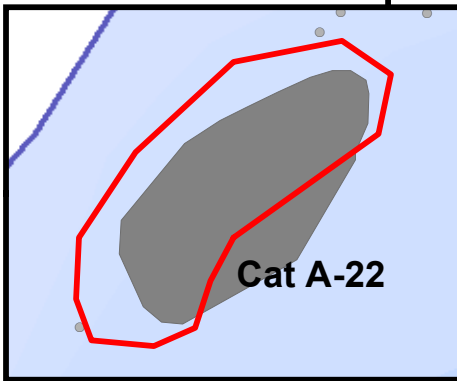
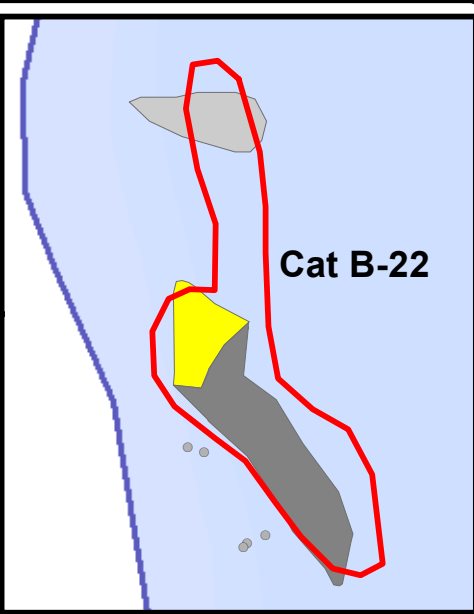
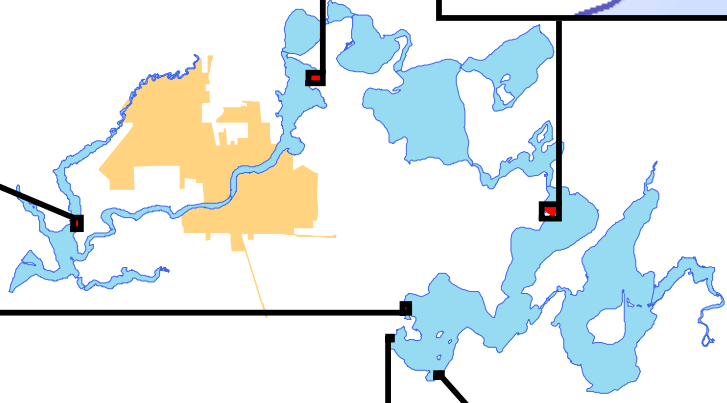
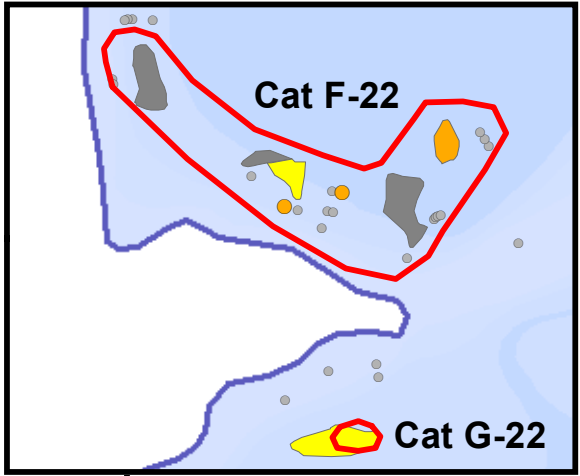
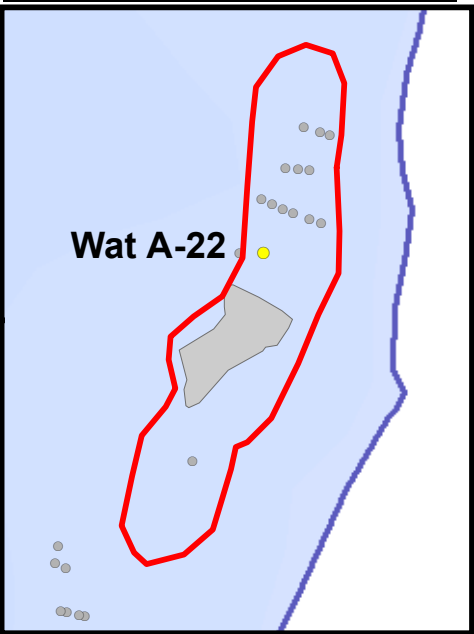
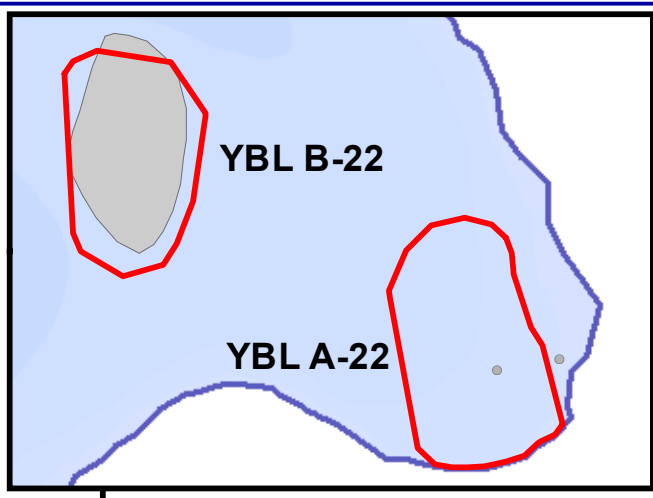


| Preliminary 2022 DASH Harvesting Areas |            |                  |
|--|------------|------------------|
| Site                                   | Acres      | Ave Depth (feet) |
| <b>Primary Sites</b>                   |            |                  |
| Cat A-22                               | 0.2        | 5.0              |
| Cat B-22                               | 0.8        | 5.0              |
| Cat E-22                               | 0.6        | 6.0              |
| Cat F-22                               | 2.8        | 5.0              |
| Cat G-22                               | 0.1        | 5.0              |
| YBL B-22                               | 1.0        | 6.0              |
| Wat A-22                               | 1.2        | 4.0              |
| <b>Primary Sites Subtotal</b>          | <b>6.8</b> |                  |
| <b>Secondary Sites</b>                 |            |                  |
| YBL A-21                               | 1.2        | 6.0              |
| <b>All Sites Total</b>                 | <b>8.0</b> |                  |

| Watersmeet          |            |
|---------------------|------------|
| Wat A-22            | 1.2        |
| <b>Catfish</b>      |            |
| Cat A-22            | 0.2        |
| Cat B-22            | 0.8        |
| Cat E-22            | 0.6        |
| Cat F-22            | 2.8        |
| Cat G-22            | 0.1        |
|                     | 4.5        |
| <b>Yellow Birch</b> |            |
| YBL A-22            | 1.2        |
| YBL B-22            | 1.0        |
|                     | 2.2        |
| <b>TOTAL</b>        | <b>8.0</b> |



**Onterra LLC**  
 Lake Management Planning  
 815 Prosper Road  
 De Pere, WI 54115  
 920.338.8860  
 www.onterra-eco.com

Sources:  
 Roads and Hydro: WDNR  
 Bathymetry: WDNR, Onterra digitized  
 Aquatic Plants: Onterra, 2021  
 Map Date: July 12, 2022 - EJH

**Legend**  
 2022 EWM Survey (6/30/2022, 7/5-7/2022)

- Highly Scattered
- Scattered
- Dominant
- Highly Dominant
- Surface Matting
- Single or Few Plants
- Clumps of Plants
- Small Plant Colony
- 2022 Primary DASH Site

Eagle River Chain  
 Vilas County, Wisconsin

**2022 Preliminary EWM Hand-Harvesting Plan**