

Eagle River Chain of Lakes

Vilas County, Wisconsin

2025 EWM Management and Monitoring Report

April 2026

Created by: Eddie Heath, Todd Hanke, Sam Dodge, Ryan Flynn
Onterra, LLC
De Pere, WI

Funded by: Unified Lower Eagle River Chain of Lakes Commission

TABLE OF CONTENTS

1.0 Introduction	2
1.1 Chain-wide EWM Management & Monitoring History	3
Manual Removal Program (2016-current)	5
2.0 2025 EWM Monitoring & Management Activities	6
2.1 Chain-wide Professional Manual Removal Activities	7
2.2 2025 Late Season EWM Mapping Survey	8
3.0 Chain-Wide Conclusions & Discussions	8
3.1 Preliminary 2026 Manual Removal Strategy	9
3.2 2026-2027 APM Planning Project	10
4.0 Individual Lake Sections	12
4.1 Cranberry Lake.....	13
4.2 Catfish Lake	15
4.3 Voyageur Lake	17
4.4 Eagle Lake.....	19
4.5 Scattering Rice Lake	21
4.6 Otter Lake.....	23
4.7 Lynx Lake	24
4.8 Duck Lake	25
4.9 Yellow Birch Lake	26
4.10 Watersmeet.....	28

1.0 INTRODUCTION

The Eagle River Chain of Lakes is comprised of ten contiguous waterbodies that spans nearly 4,000 acres. The Lower Eagle River Chain is managed by two entities: the Eagle River Chain of Lakes Association (ERCLA) and the Unified Lower Eagle River Chain of Lakes Commission (ULERCLC). ERCLA offers educational initiatives focused on topics relevant to the chain and its associated rivers while the ULERCLC largely focuses on the management of Aquatic Invasive Species (AIS). Although each organization has distinct responsibilities, they collaborate closely to protect and enhance the chain.

The ULERCLC has been the successful recipient of several Wisconsin Department of Natural Resources (WDNR) AIS Control Grants since 2007. These grants have been used to assist with monitoring and managing the Eurasian watermilfoil (*Myriophyllum spicatum*; EWM) population in the Eagle River Chain of Lakes (Figure 1.0-1) since its discovery in 2004. This report specifically discusses the monitoring and control activities conducted during 2025. The chain-wide results will be presented first, followed by results from each lake individually. Additional information regarding the management and monitoring actions completed from 2008-2024 can be found in their respective annual reports.

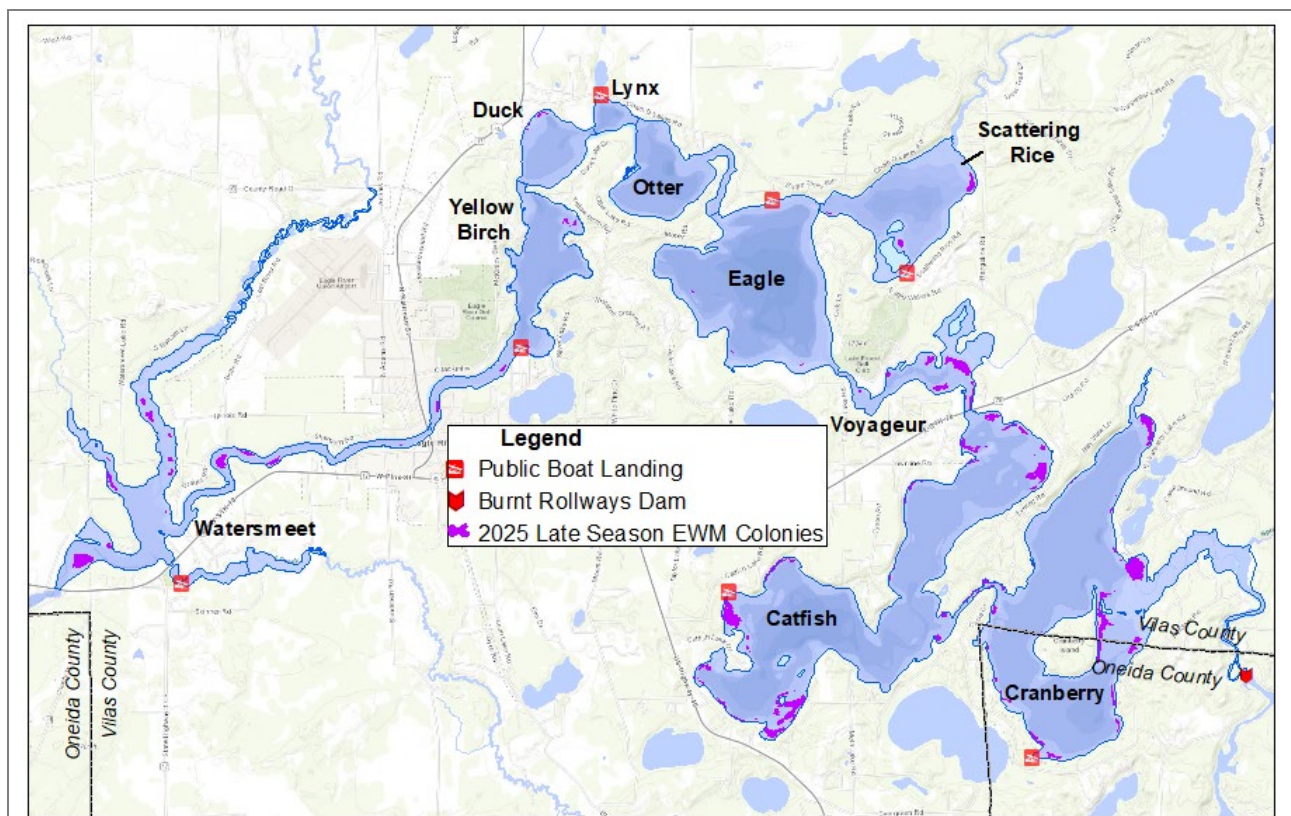


Figure 1.0-1 Lower Eagle River Chain of Lakes, Vilas-Oneida Counties. 2025 Late season EWM Colonies (>40 ft wide) are displayed.

1.1 Chain-wide EWM Management & Monitoring History

EWM mapping surveys are typically completed at two main intervals in a given year, early season (June) and late season (late-August to the end of September). These surveys consist of a complete meander survey of the system's littoral zone by professional ecologists (Photograph 1.1-1). Under the program carried out by Onterra, EWM populations encountered are mapped using sub-meter GPS technology by using either 1) point-based or 2) area-based methodologies. Large colonies >40 feet in diameter are mapped using polygons (areas) and are qualitatively attributed a density rating based upon a five-tiered scale from *highly scattered* to *surface matting*. Point-based techniques are applied to EWM locations that were considered as *small plant colonies* (<40 feet in diameter), *clumps of plants*, or *single or few plants*.



Photograph 1.1-1. EWM mapping survey on a Wisconsin lake. Photo credit Onterra.

Early Season EWM Mapping Survey results are most commonly used to prioritize the upcoming summer's manual removal program. This provides the lake group with the most up-to-date and accurate information regarding locations of EWM within the lake. These data help the lake organization prioritize the manual removal efforts, especially when the lake-wide EWM population is relatively low and identifying even small/isolated occurrences is important. When EWM populations are larger on a given lake, the utility of this survey diminishes as the previous year's Late Season EWM Mapping Survey is typically sufficient to drive management decisions and priorities.

As the name implies, the Late Season EWM Mapping Survey is a professionally contracted survey completed towards the end of the growing season when EWM is at its anticipated peak growth stage. However, on some lakes, complicated dynamics over the summer may result in EWM population declines compared to the beginning of the season. Regardless, the late season survey documents the EWM population that the system has going into winter and will be emerging in spring of next year. So these data are important for driving management decisions for next year. They are also the most important for making annual comparisons.

The ULERCLC has relied on a combination of Early Season and Late Season EWM Mapping Surveys to direct management on the Eagle River Chain. Since 2007, annual late season EWM mapping surveys have occurred and are used as the most important comparative metric for understanding the population over time. Figure 1.1-1 displays a breakdown of acreages and densities of EWM mapped using area-based methodologies (i.e. polygons). This figure excludes EWM mapped with point-based methodologies (*single or few plants*, *clumps of plants*, or *small plant colonies*). In other words, EWM marked with point-based mapping methods do not contribute to the colonized acreage shown in Figure 1.1-1.

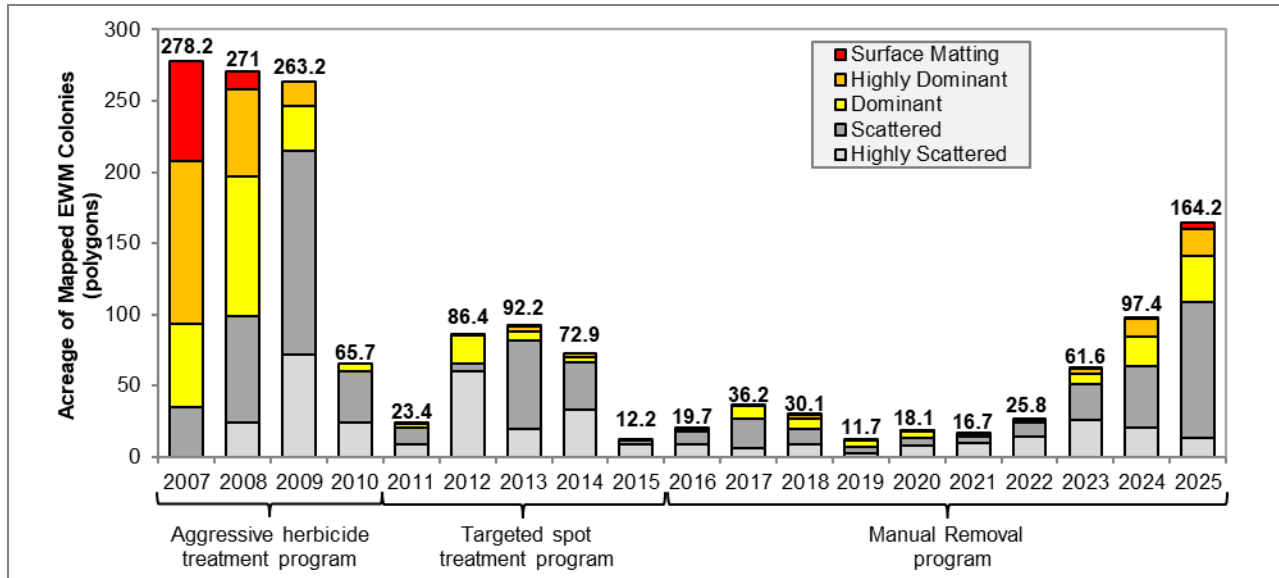


Figure 1.1-1. Chain-wide acreage of mapped EWM colonies on the Lower Eagle River Chain of Lakes from 2007-2025.

On a lake by lake basis, EWM has shown changes differently. Figure 1.1-2 shows total acreage of colonized EWM in each of the Eagle River Chain Lakes. In recent years, EWM polygon acreage has greatly increased in Catfish and Cranberry Lakes. In 2025, both lakes saw the highest acreage since Late-season mapping surveys began in 2007. When comparing the 2024 and 2025 Late Season EWM Mapping data, Cranberry, Catfish, Voyageur, Scattering Rice, Duck and Watersmeet Lakes all saw increasing in colonized EWM, while Eagle and Yellow Birch both saw reductions in colonized EWM.

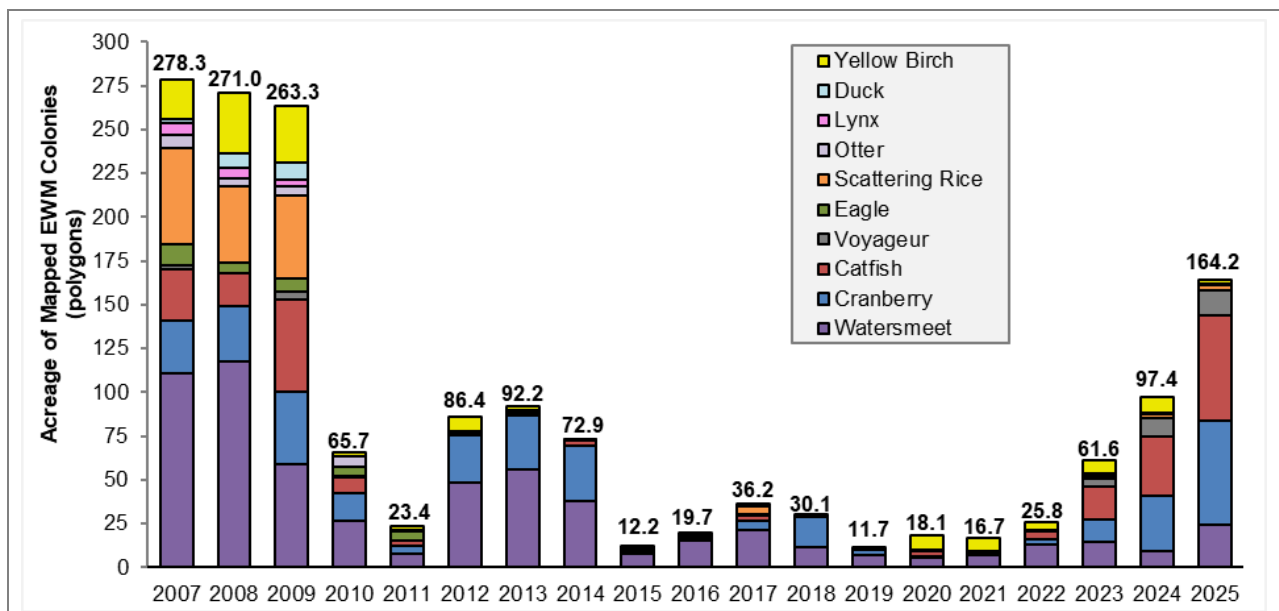


Figure 1.1-2. Total acreage of mapped EWM colonies per lake in the Lower Eagle River Chain of Lakes from 2007-2025.

In 2015, the ULERCLC developed a working treatment strategy where consideration for herbicide application would be given to areas of EWM if they met a specific threshold (i.e., trigger). This trigger was further revised as part of the *Eagle River Chain of Lakes Comprehensive Management Plan (Dec 2019)*. If the following trigger is met, the ULERCLC would consider initiating preliminary discussions, including consultation with WDNR staff, regarding conducting herbicide spot treatments:

Colonized (polygons) areas of EWM, with preference to areas of *dominant* or greater densities, that have a size/shape/location where management is anticipated to be effective.

Starting in 2024, a few locations within the Eagle River Chain met the trigger outlined above. The ULERCLC is pleased to not have had to use herbicides since 2015, and has aspirations to continue managing EWM without herbicides moving forward. As will be subsequently discussed, an updated aquatic plant management planning project is underway that will investigate risk assessment and alternatives analysis as it pertains to the next five years of EWM management on the chain.

Manual Removal Program (2016-current)

Following the herbicide management period, the EWM managed areas within the chain had diminished to the extent that herbicide spot treatment methods were no longer warranted. The ULERCLC recognized the necessity of maintaining active management instead of discontinuing and waiting for EWM populations to return to a level suitable for herbicide control. The ULERCLC enacted a strategy that balanced a level of EWM population tolerance while targeting other locations with a coordinated manual removal approach.

A series of EWM mapping surveys are used to coordinate and monitor the manual removal efforts. A preliminary hand harvesting strategy is developed over the fall/winter based on the results of the previous year's Late-Summer EWM Mapping Survey. In late-spring/early summer, an Early Season EWM Mapping Survey is completed from which the manual removal strategy is finalized. After the professional manual removal activities are completed, Onterra completes a focused Late-Summer EWM Mapping Survey supplemented with volunteer surveillance monitoring, the results of which serve as a post-harvesting assessment of the manual removal efforts. The manual removal program would be considered successful if the EWM population within the targeted areas was found to have been reduced and inhibited from expanding between the year before and year after Late-Summer EWM Mapping Surveys.

Diver Assisted Suction Harvest (DASH) is a form of manual removal which involves divers removing target plants (i.e., EWM) and feeding them into a suctioned hose for delivery to the deck of the harvesting vessel. The DASH system is thought to be more efficient than manual removal alone as the diver does not have to go to the surface to deliver the pulled plants to someone on a boat. The DASH system also is believed to cause less fragmentation, as the plants are immediately transported to the surface using the pumping mechanism. The ULERCLC utilizes contracted professional DASH services to carry out their manual removal EWM management strategy.

2.0 2025 EWM MONITORING & MANAGEMENT ACTIVITIES

Based on the results of the 2024 Late Season EWM Mapping Survey, a preliminary manual removal strategy was designed for areas of Catfish, Voyageur, and Yellow Birch lakes for 2025 (Figure 2.0-1). These areas would receive added focus during the 2025 Early Season EWM Mapping Survey, allowing additional refinement and prioritization of the manual removal plan.

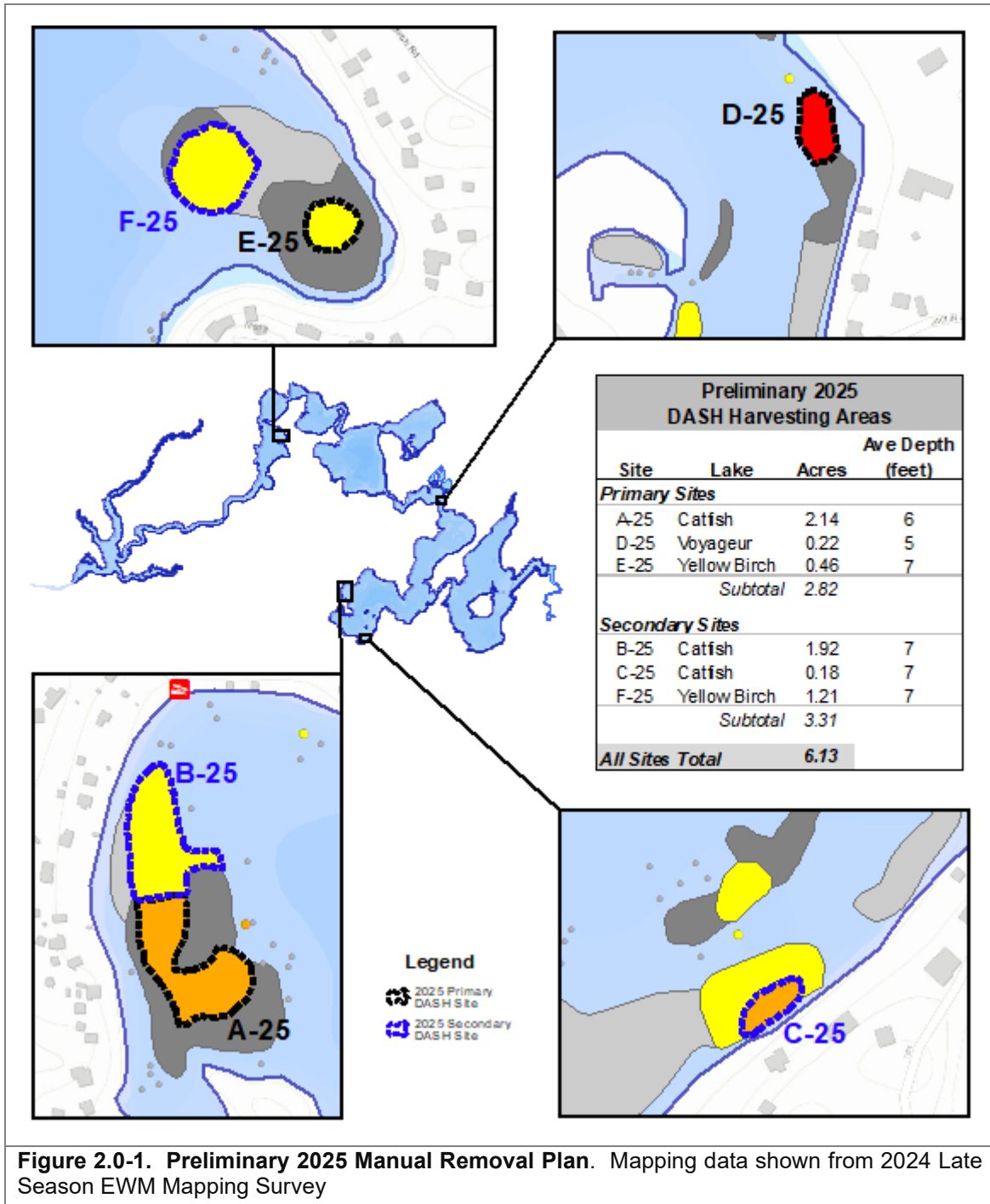
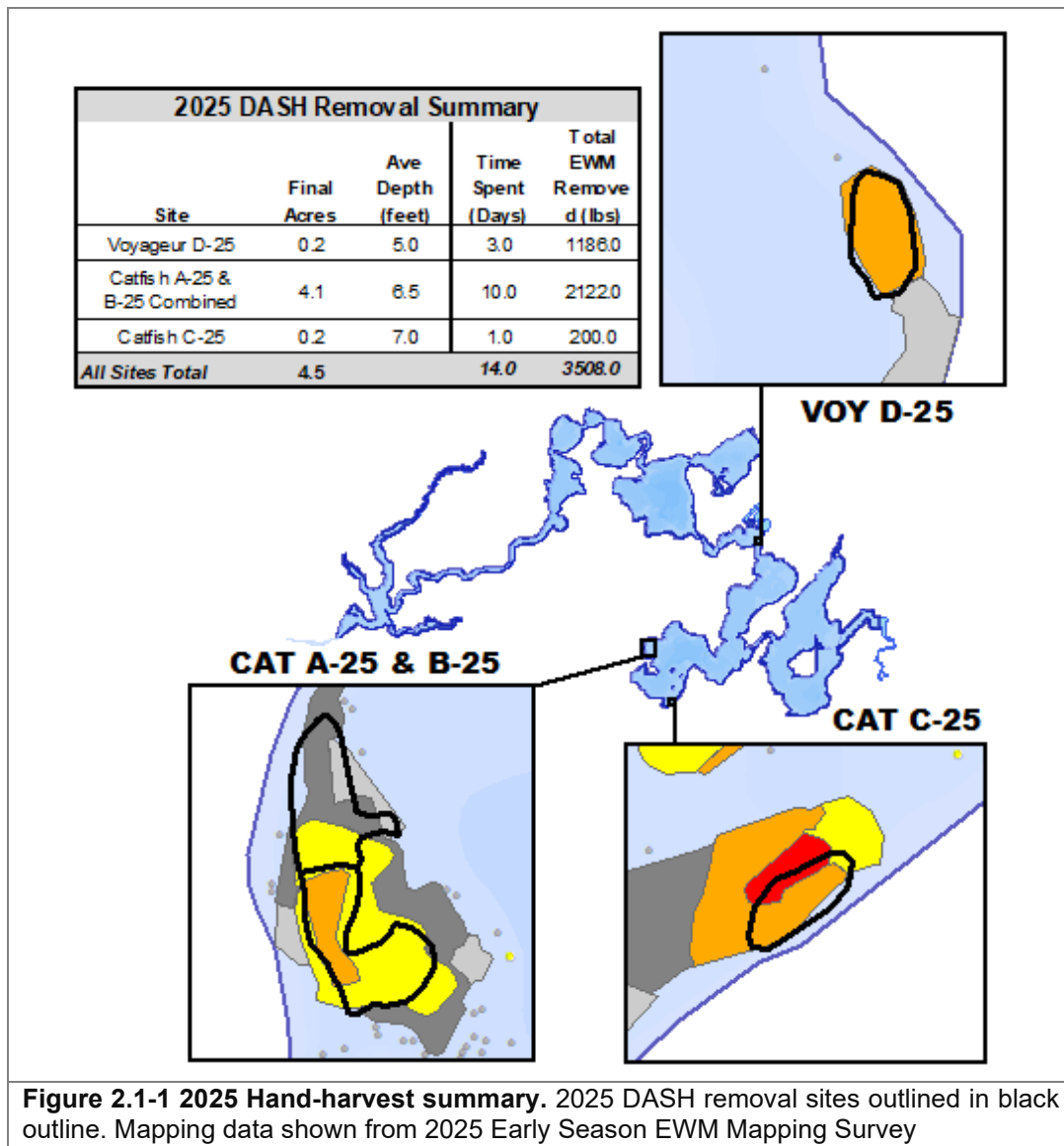


Figure 2.0-1. Preliminary 2025 Manual Removal Plan. Mapping data shown from 2024 Late Season EWM Mapping Survey

2.1 Chain-wide Professional Manual Removal Activities

The ULERCLC EWM Committee created a site prioritization methodology that considered EWM density from the 2025 Early Season EWM Mapping Survey, high-use areas, and other factors. While there were initially five proposed harvesting sites for 2025, four sites were narrowed down to be the subject of the 2025 manual removal efforts (Figure 2.1-1). Onterra provided the contracted professional manual removal firm with the spatial data from the Early Season EWM Mapping Survey and the targeted manual removal sites to coordinate the removal efforts.



The ULERCLC contracted with DASH Aquatic Services, LLC in 2025 to provide professional manual removal services using DASH methods. Over the course of about 14 days, approximately 3,508 lbs of EWM were removed from the Eagle River Chain in 2025. Further details of manual removal efforts and amount of EWM removed on a site-by-site basis is discussed within the Individual Lake Sections (4.0) below.

2.2 2025 Late Season EWM Mapping Survey

During mid-September 2025, multiple Onterra crews conducted the Late Season EWM Mapping Survey on the Eagle River Chain. The crews noted good survey conditions for the duration of survey, including only a light breeze and partially cloudy skies each day. During this survey, crews focused on systematically meandering areas of the littoral zone where EWM was found during the Early Season EWM Mapping Survey and mapped all EWM encountered.

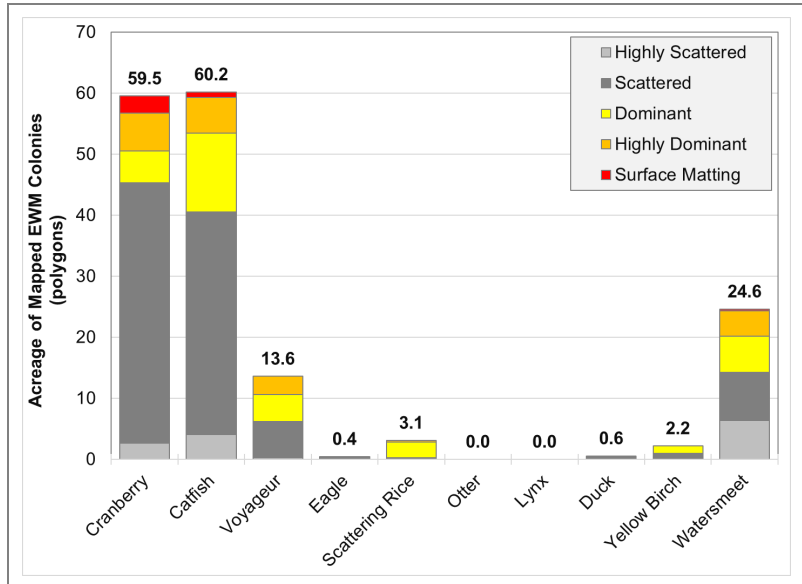


Figure 2.2-1. Distribution of acreage & density of mapped EWM colonies by lake in 2025.

As shown on Figure 2.2-1, just shy of 165 acres of colonized EWM was located during the 2025 Late Season EWM Mapping Survey on the Chain. In 2025, the lakes with the most EWM mapped were Catfish and Cranberry Lakes. All lakes except Otter and Lynx contained colonized acreage of EWM.

3.0 CHAIN-WIDE CONCLUSIONS & DISCUSSIONS

Overall, there has been a significant reduction of EWM in the Eagle River Chain since the start of the management program in 2007. It is clear that the management program has resulted in a lowered EWM population compared to if it was left unmanaged.

But it is also important to note the role of the reduced water clarity in the system this past decade. On the Eagle River Chain, water clarity has been tied to precipitation. As precipitation increases, water clarity decreases. The increase in precipitation brings in more nutrients from the watershed which increases algal production. The increased precipitation also brings in more organic compounds which give the system its brown *stained* appearance. When EWM is treated and also has the added environmental stress of low water clarity, it is more difficult for the plants to rebound following the management action. The darker water has likely helped the treatments

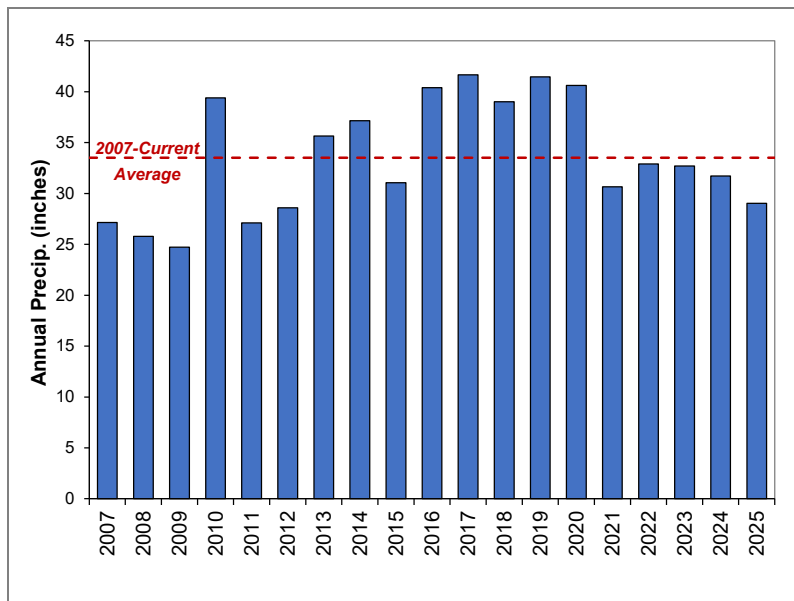


Figure 3.0-1. Eagle River station average annual precipitation. <https://mrcc.purdue.edu/>

be more effective and last longer. Said another way, if the chain had clearer water during the years of treatment, the results may not have been as positive. The slightly below average precipitation levels observed since 2021, and the corresponding increase in water clarity, may also be a driver in the increased EWM population observed on the chain in that timeframe (Figure 3.0-1). If low precipitations levels persist, Onterra predicts larger and denser EWM populations within the Eagle River Chain regardless of management intervention.

3.1 Preliminary 2026 Manual Removal Strategy

Using the 2025 Late Season EWM Mapping Surveys, a preliminary professional manual removal EWM control strategy for 2026 was developed targeting five sites in Catfish Lake (two primary and three secondary) and one secondary site in Cranberry Lake (Figure 3.1-1). Based upon the results of the 2026 Early Season AIS Survey, areas could potentially be added, omitted, or revised. Post manual removal assessments will be made from a 2026 Late Season EWM Mapping Survey.

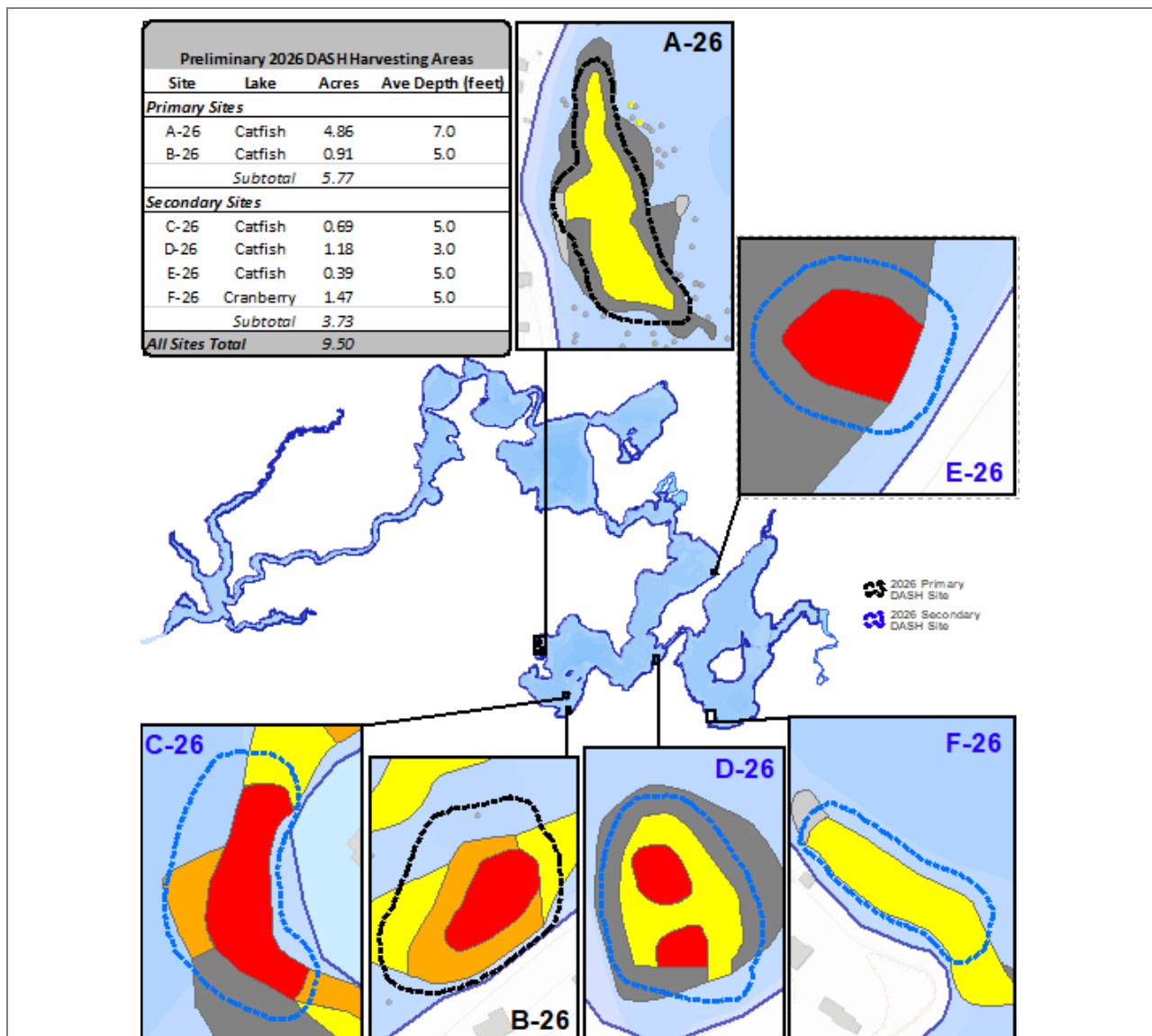


Figure 3.0-3 Preliminary 2026 Manual Removal Plan. Map to be submitted for NR109 permit for DASH. Primary sites are outlined in black dashed line and secondary sites are outlined in blue dashed lines.

It is also important to note that each riparian owner can legally harvest EWM and native plant species in a 30-foot-wide area of one's frontage directly adjacent to one's pier without a permit. A permit is only required if an area larger than the 30-foot corridor is being harvested or if a mechanical assistance mechanism, like DASH, is being used. Simply wading into the lake and removing EWM by hand with or without the aid of snorkeling accessories can be helpful in managing EWM on a small and individual property-based scale.

Manual Removal of Plants Around Your Dock

Less is More

Aquatic plants provide significant benefit to our shorelines. Only remove plants to get your boat to open water and recreate.

This homeowner manually removed one 30-foot swath of aquatic plants around their pier for their boat and swimming. No permit was needed. There was no wild rice in the area.

It's up to all of us to protect the nearshore from erosion, water quality impacts and habitat destruction.

Discover More:
Wisconsin's Healthy Lakes Program - Best Practices

dnr.wi.gov/tiny/3446

The infographic includes a Wisconsin Department of Natural Resources logo, a QR code, and two diagrams. The top diagram shows a house with a pier extending into a lake. The bottom diagram shows a cross-section of the lake with a pier, a boat, and a 30-foot wide area marked for manual removal of aquatic plants.

Figure 3.1-1. Optional property owner hand harvesting. Figure extracted from DNR website.

3.2 2026-2027 APM Planning Project

In the past decade, there have been large changes in EWM management philosophies, techniques, and risk management. For this reason, the WDNR now requires that *Aquatic Plant Management (APM) Plans* need to be periodically updated at a minimum of five-year intervals to maintain eligibility for certain grants and permits.

With the last Aquatic Plant Management Plan (APM) being completed as a part of the 2019 *Comprehensive Management Plan*, the ULERCLC recently applied for and was awarded a series of WDNR Surface Water Planning Grants to fund studies and planning activities during 2026-2027 that will ultimately lead to an updated APM Plan for the ULERCLC.

The APM Planning project would have an obvious focus on the aquatic plant component of the Eagle River Chain, with the main survey component being mid-summer point-intercept aquatic plant surveys on the 10 lake chain. The APM Plan would also include a trophic water quality assessment

using current and historic volunteer-collected data, a general stakeholder survey open to all lake users, and a series of meetings that would create realistic management goals and associated actions for the ULERCLC to carry out over the next five-year period. The ULERCLC is particularly interested in revisiting aquatic plant management goals for EWM (manual removal and herbicide) based upon current philosophies, risk assessments, and Best Management Practices. The resulting APM Plan would satisfy requirements under NR193, NR107, and NR109.

During the summer of 2025, continued project design and grant application development occurred to start an APM Planning Project in 2026-2027. Therefore, the planning project would be completed at the same time the 3-year AIS Control Grant will be completed and the ULERCLC would be again eligible to apply for a grant for 2028 and beyond (Figure 3.2-2).

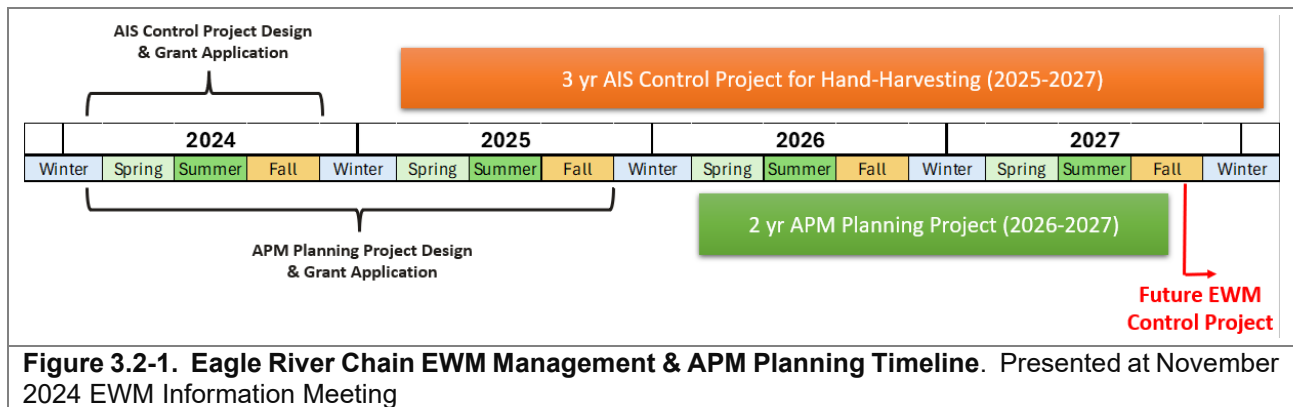


Figure 3.2-1. Eagle River Chain EWM Management & APM Planning Timeline. Presented at November 2024 EWM Information Meeting

4.0 INDIVIDUAL LAKE SECTIONS

The remainder of this report will focus on the 2025 EWM monitoring and management activities on a lake-by-lake basis. Some of the text will seem redundant if one reads each lake section. However, this is intentional to ensure the information is portrayed to those who only read the chain-wide sections and their individual lake-specific section.

Early Season EWM Mapping Survey were completed on June 25-26, June 30 and July 1-2, 2025. During the Early Season EWM Mapping Survey, the entire littoral zone of the Eagle River Chain of Lakes was searched for EWM by Onterra field staff. Completion of an Early Season EWM Mapping Survey presents numerous advantages. Typically, the water is clearer during the early summer allowing for more effective viewing of submersed plants. While not at their peak growth stage (peak biomass), EWM plants are higher in the water column than most native plants during this time of year which increases the chances that even low-density and isolated EWM occurrences would be located.

The Late Season EWM Mapping Survey was completed on September 16-18, 2025. During the Late Season EWM Mapping Survey, Onterra ecologists revisited and refined areas of EWM mapped during the Early Season EWM Mapping Survey as well as any areas marked by volunteers. The following individual lake sections will focus on the results of the 2025 Late Season EWM Mapping Survey in the context of manual removal efforts that may have taken place. The 2025 Late Season EWM Mapping Survey results map for each lake is provided after the respective individual lake section. Stand alone maps for both EWM survey maps can be found at:

<https://eagleriverchaincommission.org/reports/>

4.1 Cranberry Lake

The 2025 Late Season EWM Mapping Survey located EWM in much of the littoral zone of the lake, much of which was mapped with point-based mapping methods (Map 1). The majority of the colonized EWM was located in shallow protected bays or indented shoreline. The total acreage of EWM colonies mapped during the 2025 Late Season EWM Mapping Survey was 59.6 acres, the most observed since herbicide management ceased (Figure 4.1-1).

While increases in the EWM population were observed in 2025, the majority of colonies were considered *highly scattered* or *scattered* colonies and therefore likely not impeding recreational opportunities. During 2025, many of the denser EWM colonies were located in areas with a relatively low number of affected riparian property owners. However, those denser EWM colonies considered to be either *dominant*, *highly dominant* or *surface matting* densities were more abundant in Cranberry Lake than any year since herbicide management ceased.

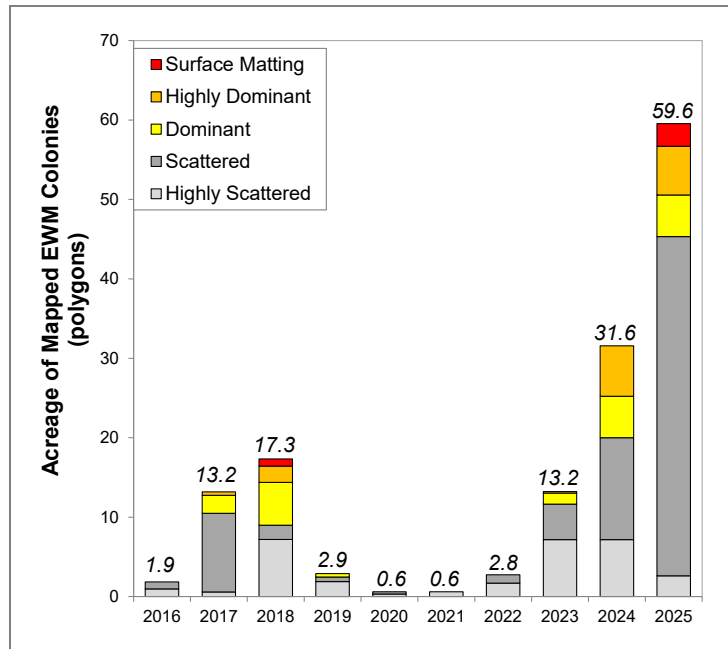


Figure 4.1-1. Cranberry Lake acreage of mapped EWM colonies during 2016-2025 Late Season EWM Mapping Surveys.

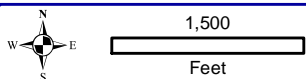
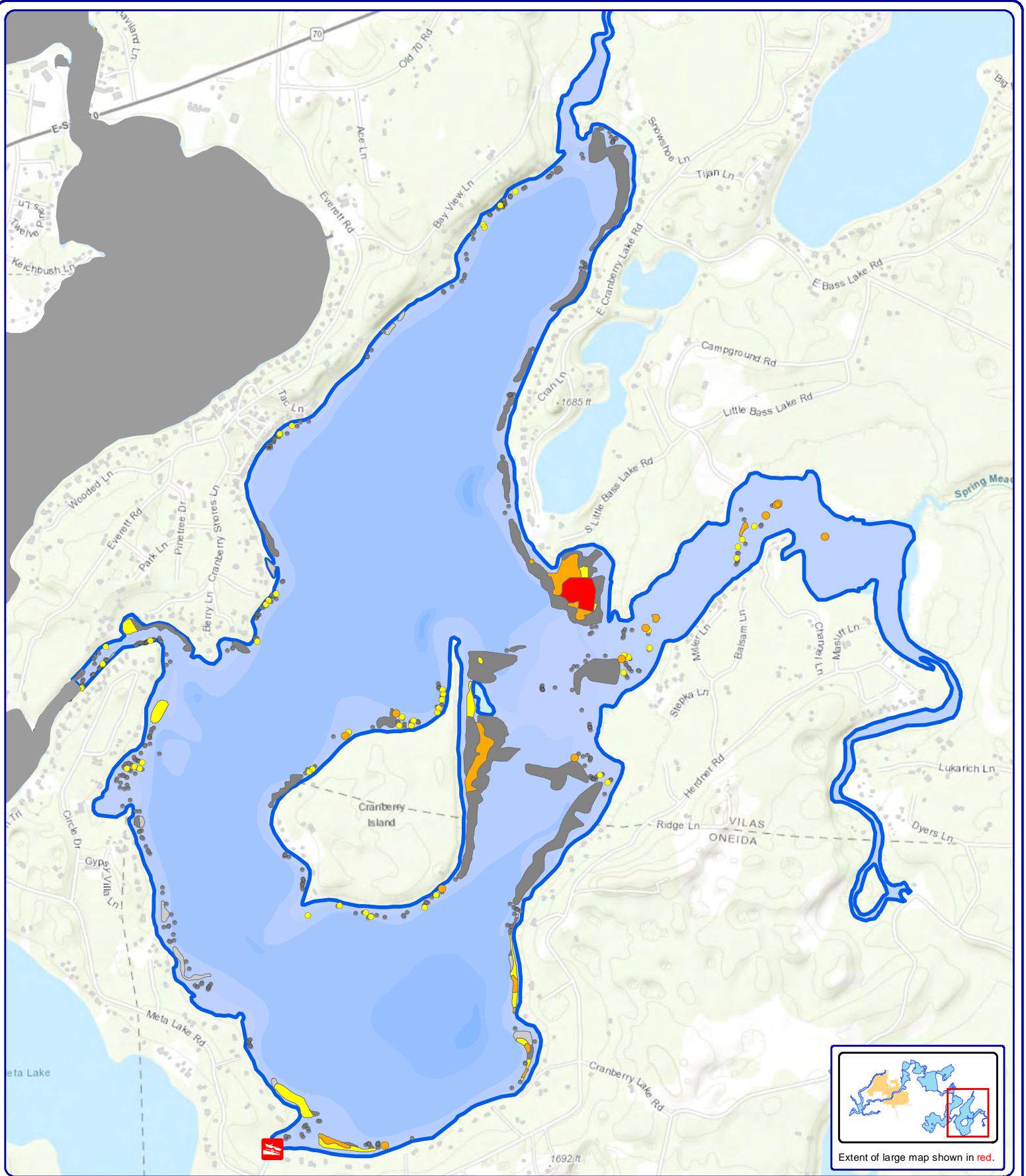
During the late-summer of 2018, a large and dense area of EWM existed in the upstream channel of Cranberry Lake. This EWM population has continued to decline in recent years even though no herbicide management has occurred. The late-summer 2025 EWM population continues to be low in this part of the lake, but larger areas of *scattered* density EWM colonies were mapped near the northern channel in 2025.

One area in Cranberry Lake is initially being considered for contracted manual removal in 2026 (Figure 3.0-3). Based upon the 2026 Early Season EWM Mapping Survey, a refined and final strategy will be devised.

Early Season and Late Season Mapping Survey data were overlaid to analyze the colonization (>40 ft wide colonies) of EWM and how its distribution changed from early to late season in 2025. In Map 2, green areas indicate locations where EWM was detected only during the Early-Season Survey and represent areas that retracted during the 2025 growing season. Yellow areas are locations where EWM was observed only during the late-season survey and represent areas where EWM colonies expanded in 2025. Pink areas highlight where EWM colonization was present in both surveys, indicating the areas of most prevalent colonization during the 2025 growing season. It is important to note that point-based mapping is not included in this map.

Map 2 shows that the majority of EWM colonies expanded from early to late season surveys, with several areas transitioning from point-based occurrences in early season to polygon-sized colonies by

the end of the season. The most notable expansions occurred along the northern half of the eastern shoreline and east of Cranberry Island. In contrast, a few areas showed reductions but were limited to change from low-density polygons to point-based occurrences in the late-season survey including the outlet channel on the west side of the lake and along the shoreline side of the polygons mapped in the far northern bay.



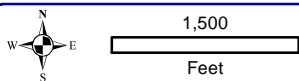
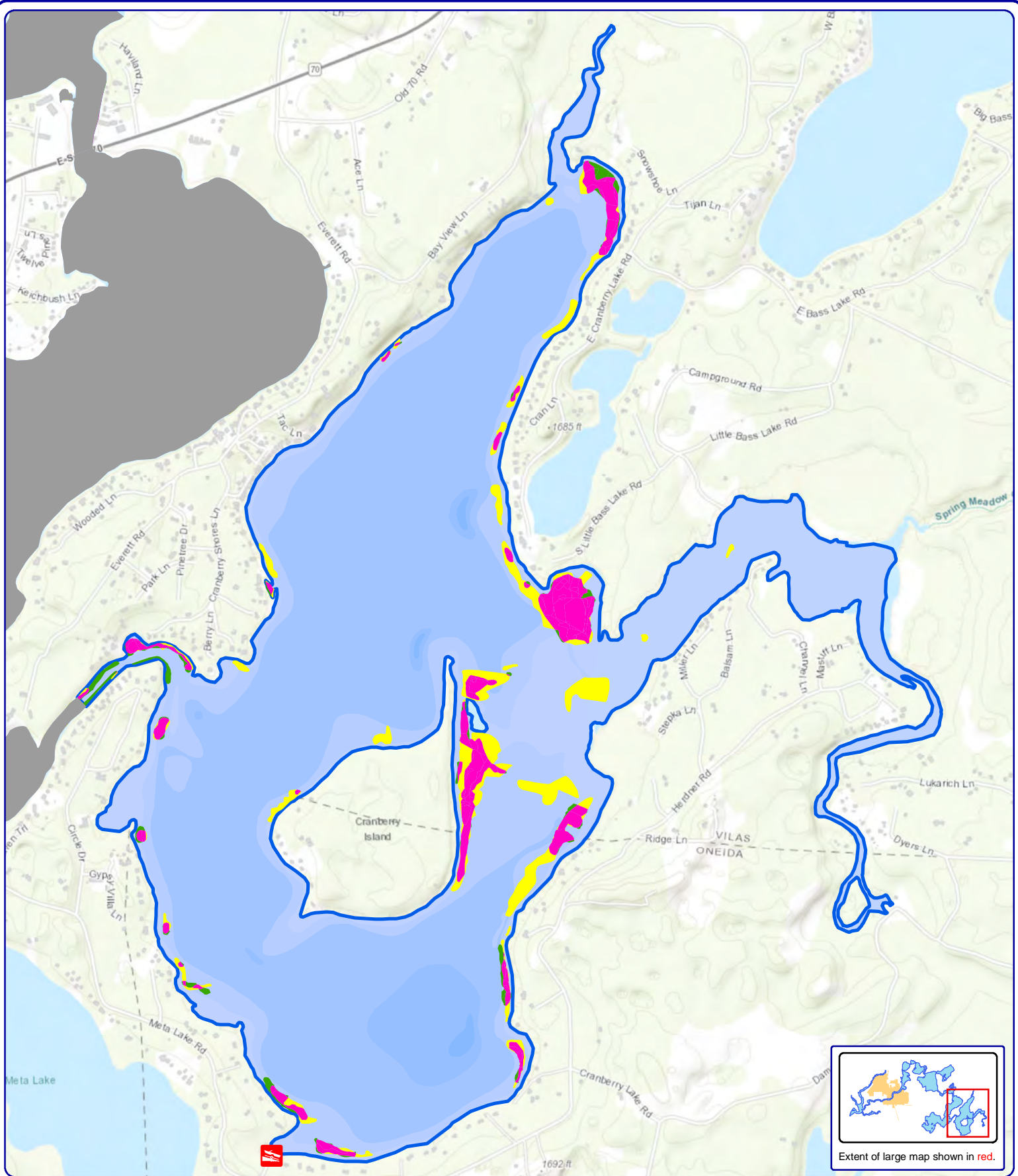
Onterra LLC
 Lake Management Planning
 815 Prosper Road
 De Pere, WI 54115
 920.338.8860
 www.onterra-eco.com

Sources:
 Basemap: ESRI AGOL
 Bathymetry: WDNR, Onterra digitized
 Aquatic Plant Survey: Onterra, 2025
 Map Date: October 24, 2025 - EJH

Legend

- EWM Survey Results (September 16-18, 2025)**
- Highly Scattered
 - Scattered
 - Dominant
 - Highly Dominant
 - Surface Matting
 - Single or Few Plants
 - Clumps of Plants
 - Small Plant Colony

Map 1
 Cranberry Lake
 Vilas County, Wisconsin
Late-Season 2025
EWM Survey Results



Onterra LLC
 Lake Management Planning
 815 Prosper Road
 De Pere, WI 54115
 920.338.8860
 www.onterra-eco.com

Sources:
 Basemap: ESRI AGOL
 Bathymetry: WDNR, Onterra digitized
 Aquatic Plant Surveys: Onterra, 2025
 Map Date: April 6, 2026 - RMF

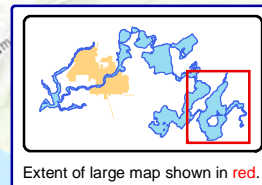
Legend

Colonized EWM in 2025 (>40 ft in diameter)

- Early Season Only
- Late Season Only
- Both Early and Late Season

Map 2
Cranberry Lake
 Vilas County, Wisconsin

2025 Colonized EWM
Early to Late Season



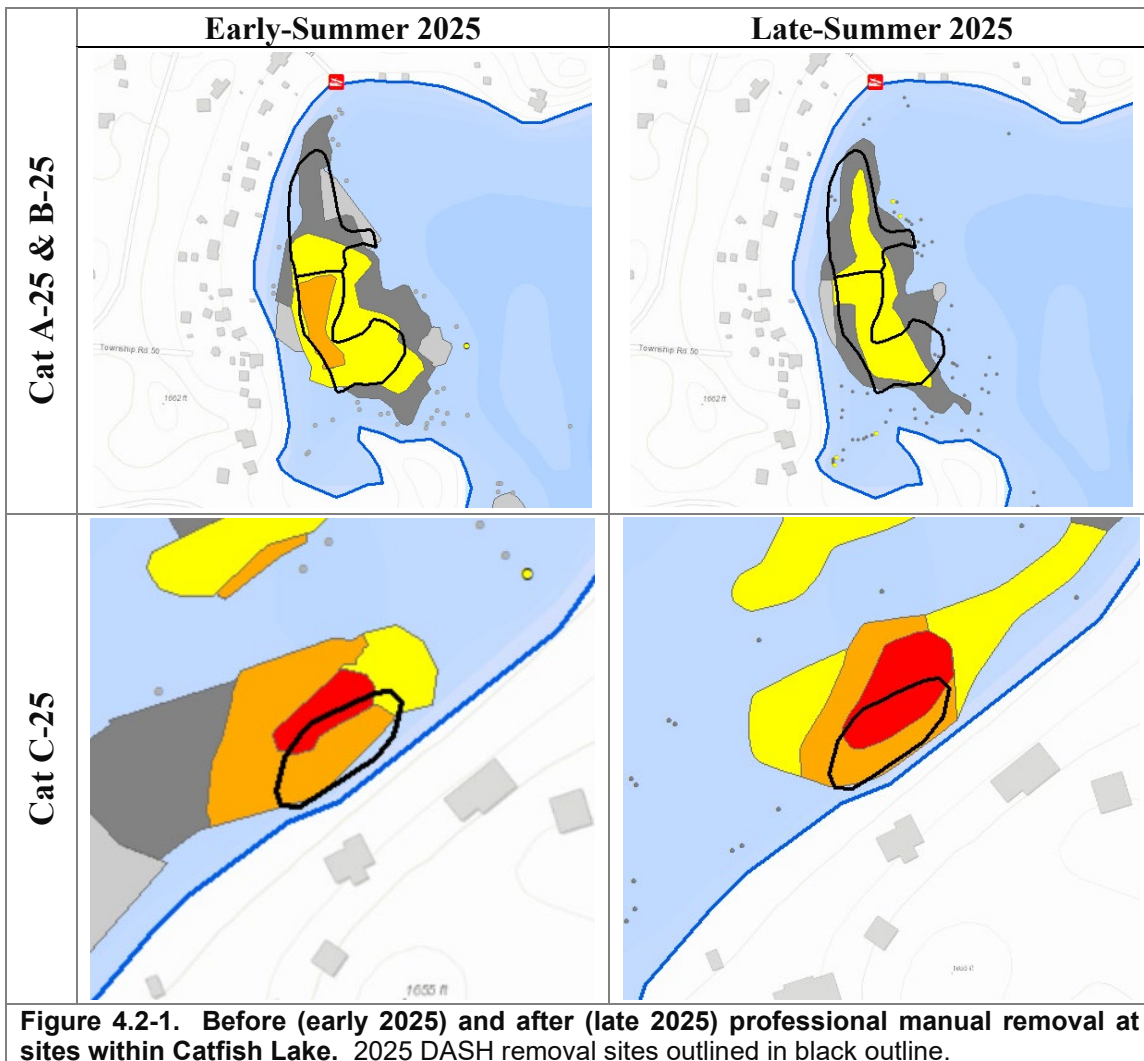
4.2 Catfish Lake

The ULERCLC contracted with DASH Aquatic Services, LLC to conduct professional DASH harvesting of EWM in three sites in Catfish Lake in 2025. Over a period of 11 days in 2025, a total of approximately 2,322 pounds of EWM were harvested from sites within Catfish Lake (Table 4.2-1).

Site Cat A-25 & B-25 had the greatest amount of professional harvesting efforts in 2025 with approximately 2,122 pounds of EWM removed over ten days. Monitoring shows no *highly dominant* EWM colonies after the removal took place; however, *highly scattered*, *scattered* and *dominant* colonies still remained in this site (Figure 4.2-1, top frames). The mapping data illustrates a reduction in the densest portion of the targeted area as a result of the harvesting efforts.

Table 4.2-1. 2025 Hand-harvest summary.

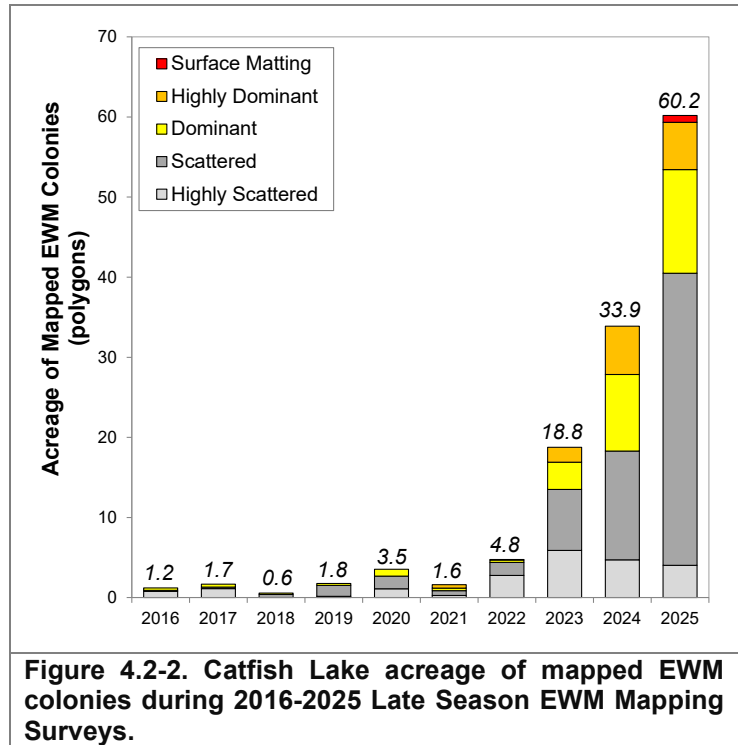
2025 DASH Removal Summary		
Site	Time Spent (Days)	Total EWM Removed (lbs)
Catfish A-25 & B-25 Combined	10.0	2122.0
Catfish C-25	1.0	200.0
All Sites Total	11.0	2322.0



Site Cat C-25 had approximately 200 pounds of EWM removed over one day. While short-term EWM reductions likely occurred, the rate of EWM rebound over the summer resulted in this site

containing a relatively similar EWM population by the time the September Late Season EWM Mapping Survey took place (Figure 4.2-1, bottom frames). More harvesting efforts beyond one day would have been needed in order to achieve a reduction in EWM density in this site.

The 2025 Late Season EWM Mapping Survey located EWM in most of the littoral zone of the lake, much of which was mapped with point-based mapping methods (Map 3). Colonized EWM was located in a few of the more protected bays of the lake that are generally more conducive to aquatic plant growth, with the largest and densest EWM colonies located in the bay near the Braywood boat landing and along the northeast shoreline of the lake near the Hwy 70 bridge. The total acreage of EWM colonies mapped during the 2025 Late Season EWM Mapping Survey was 60.2 acres, the most observed since herbicide management ceased (Figure 4.2-2).

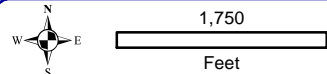
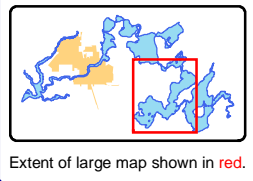
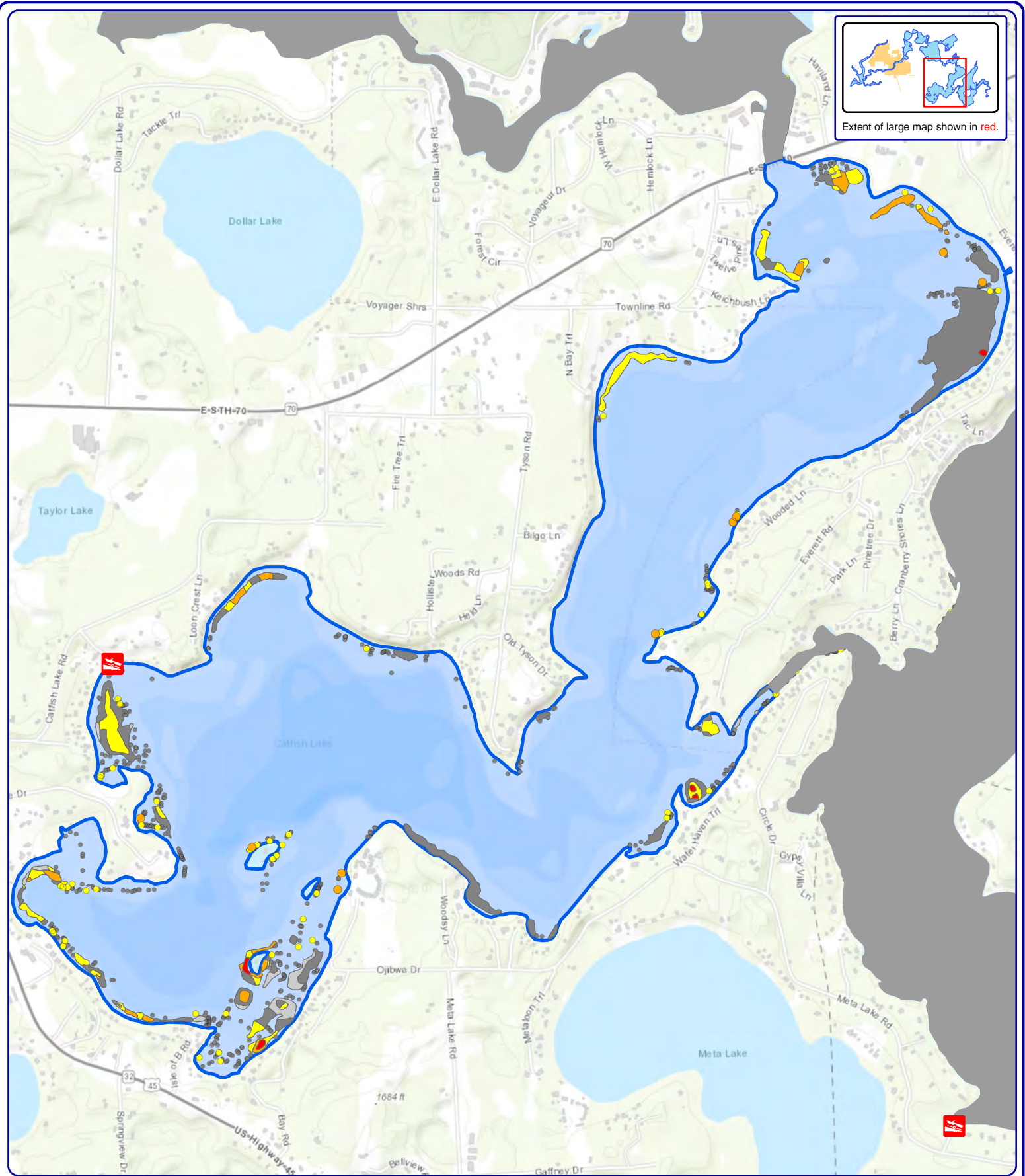


Approximately two-thirds of the mapped EWM colonies consisted of *highly scattered* or *scattered* densities, likely not impeding recreational opportunities at the current time.

The ULERCLC will again use manual removal efforts in Catfish Lake in 2026. Five (5) sites in Catfish Lake are being preliminarily considered for manual removal in 2026 (Figure 4.0-3). Based upon the 2026 Early Season EWM Mapping Survey, a refined and final strategy will be devised.

Early Season and Late Season Mapping Survey data were overlaid to analyze the colonization (>40 ft wide colonies) of EWM and how its distribution changed from early to late season in 2025. In Map 4, green areas indicate locations where EWM was detected only during the Early-Season Survey and represent areas that retracted during the 2025 growing season. Yellow areas are locations where EWM was observed only during the late-season survey and represent areas where EWM colonies expanded in 2025. Pink areas highlight where EWM colonization was present in both surveys, indicating the areas of most prevalent colonization during the 2025 growing season. It is important to note that point-based mapping is not included in this map.

Map 4 shows several EWM colonies expanded and retracted from early to late season. Several of these areas transitioned from point-based occurrences in early season to polygon-sized colonies by the end of the season. The most notable expansions occurred along the northeastern bay and the shoreline near Woodsy Lane in the central southern shoreline of the lake. In contrast, a few areas showed reductions from early to late season but were limited to change from low-density polygons to point-based occurrences including the very southern bay of the lake and the colony near the boat launch on the western part of the lake.



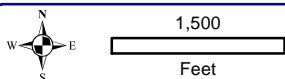
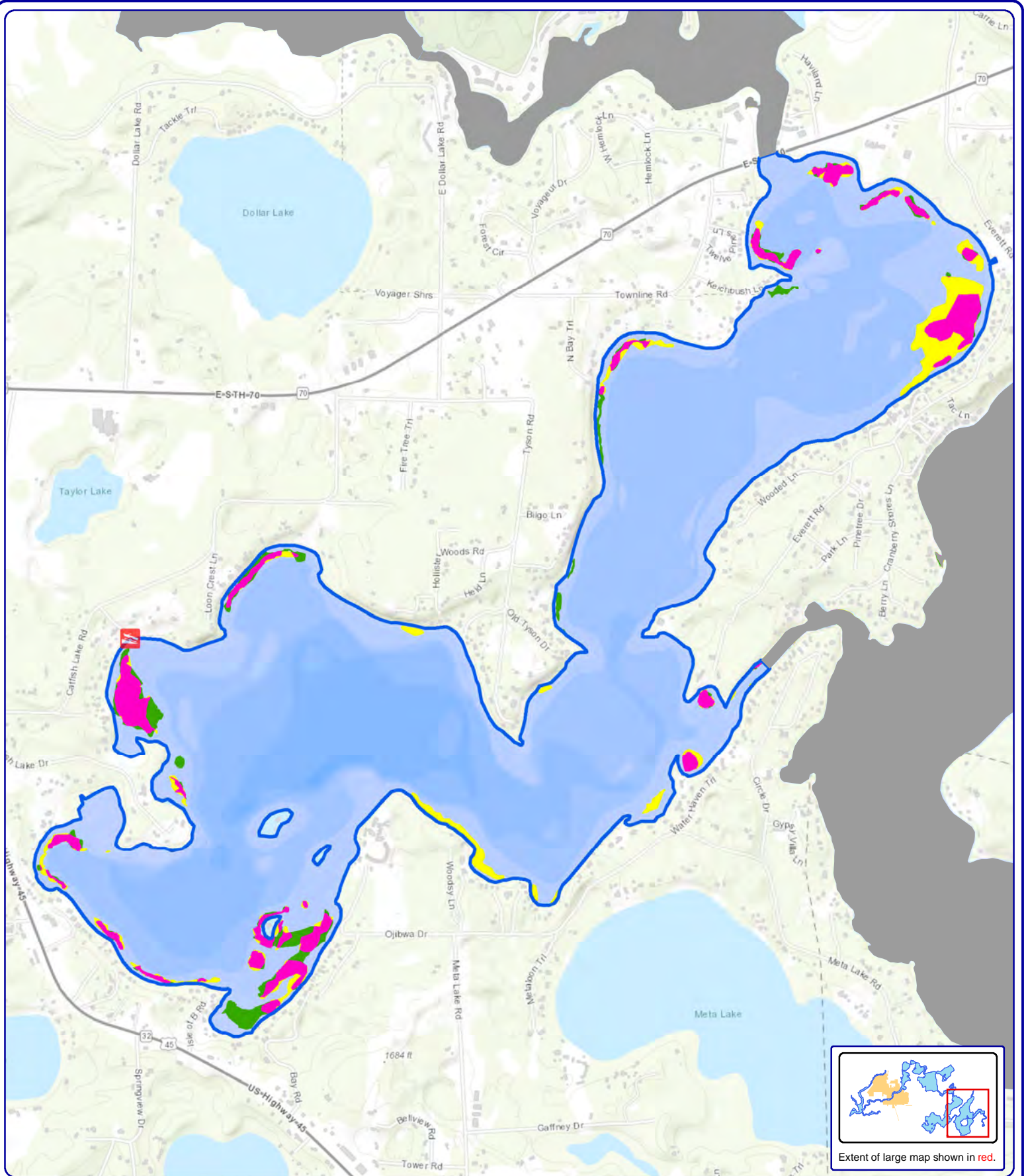
Onterra LLC
 Lake Management Planning
 815 Prosper Road
 De Pere, WI 54115
 920.338.8860
 www.onterra-eco.com

Sources:
 Basemap: ESRI AGOL
 Bathymetry: WDNR, Onterra digitized
 Aquatic Plant Survey: Onterra, 2025
 Map Date: October 24, 2025 - EJJ

Legend

- EWM Survey Results (September 16-18, 2025)**
- Highly Scattered
 - Scattered
 - Dominant
 - Highly Dominant
 - Surface Matting
 - Single or Few Plants
 - Clumps of Plants
 - Small Plant Colony

Map 3
Catfish Lake
 Vilas County, Wisconsin
Late-Season 2025
EWM Survey Results



Onterra LLC
 Lake Management Planning
 815 Prosper Road
 De Pere, WI 54115
 920.338.8860
 www.onterra-eco.com

Sources:
 Basemap: ESRI AGOL
 Bathymetry: WDNR, Onterra digitized
 Aquatic Plant Surveys: Onterra, 2025
 Map Date: April 7, 2026 - RMF

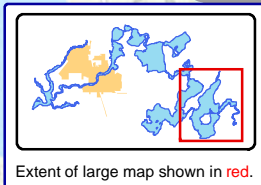
Legend

Colonized EWM in 2025 (>40 ft in diameter)

- Early Season Only
- Late Season Only
- Both Early and Late Season

Map 4
Catfish Lake
 Vilas County, Wisconsin

2025 Colonized EWM
Early to Late Season



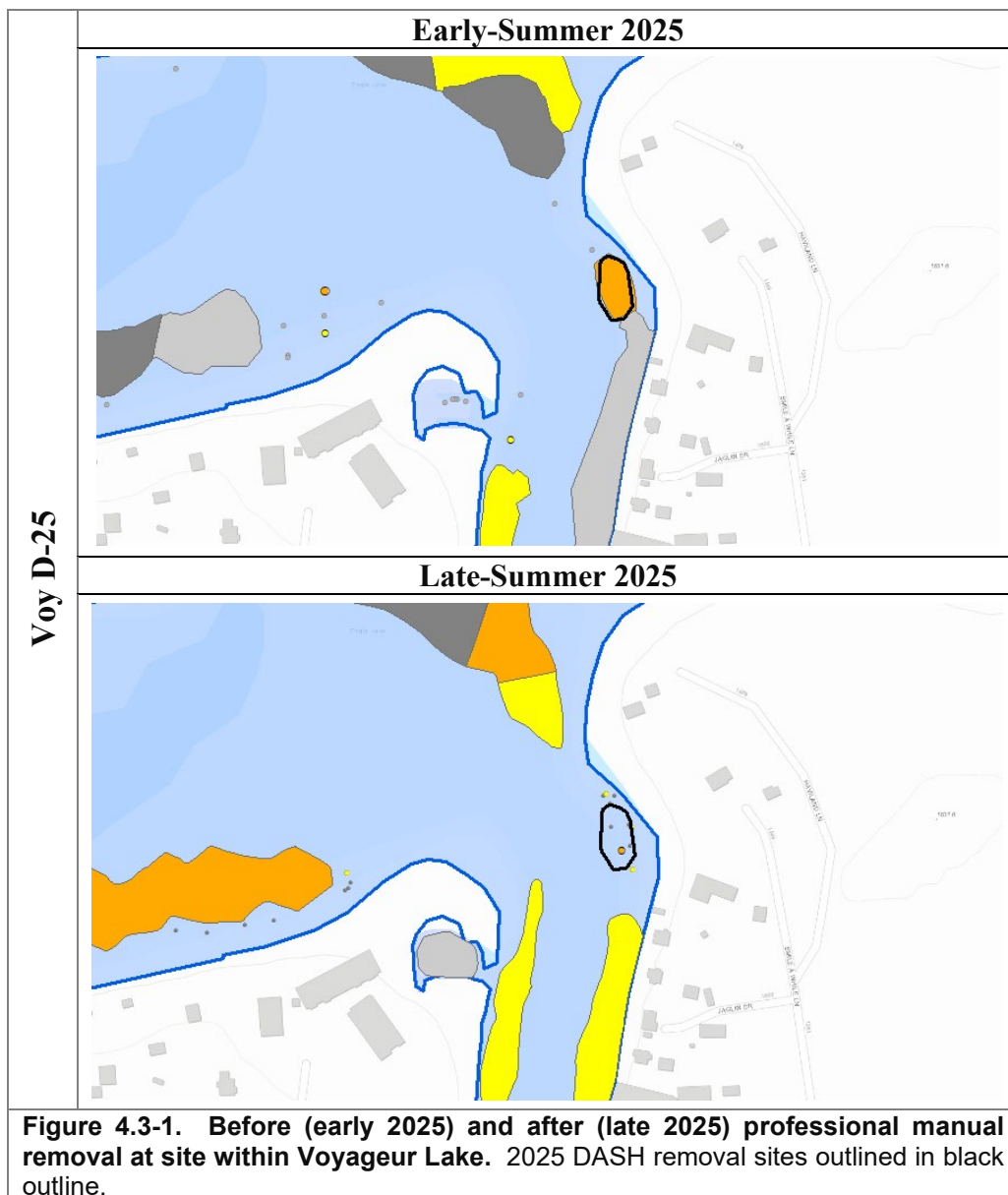
4.3 Voyageur Lake

The ULERCLC contracted with DASH Aquatic Services, LLC to conduct professional DASH harvesting of EWM in one site in Voyageur Lake in 2025. Over a period of about three days in 2025, a total of approximately 1,186 pounds of EWM was harvested from the site within Voyageur Lake (Table 4.3-1).

Table 4.3-1. 2025 Hand-harvest summary.

2025 DASH Removal Summary		
Site	Time Spent (Days)	Total EWM Removed (lbs)
Voyageur D-25	3.0	1186.0
All Sites Total	3.0	1186.0

Site Voy D-25 had approximately 1,186 pounds of EWM removed over three days. Monitoring showed that all colonized EWM within the site during the Early-Season EWM survey was reduced to point-based data in the Late-Season EWM survey. However, an increase in the surrounding colonies of EWM was monitored in the Late-Season EWM survey, with *dominant* colonies of EWM being mapped both north and south of site Voy D-25 along with *highly dominant* colonies mapped in nearby areas as well (Figure 4.3-1).



The 2025 Late Season EWM Mapping Survey located EWM in most of the littoral zone of the lake, approximately half of which was mapped as low density colonies (*highly scattered* and *scattered* densities) (Map 5). Compared to the findings in 2024, there was a large increase in higher density colonized EWM (*dominant* and *highly dominant*) that was mapped during the Late-Season EWM survey in 2025.

The current EWM population is fairly confined to nearshore areas and is outside of the traditional navigation path used by boaters to get between Catfish and Eagle Lakes.

The total acreage of EWM colonies mapped during the 2025 Late Season EWM Mapping Survey was 13.6 acres, the most observed since herbicide management ceased (Figure 4.3-2). EWM populations were present in these locations in prior surveys, but only consisted of point-based occurrences that do not contribute acreage to Figure 4.3-2. No areas are being considered for professional manual removal in 2026.

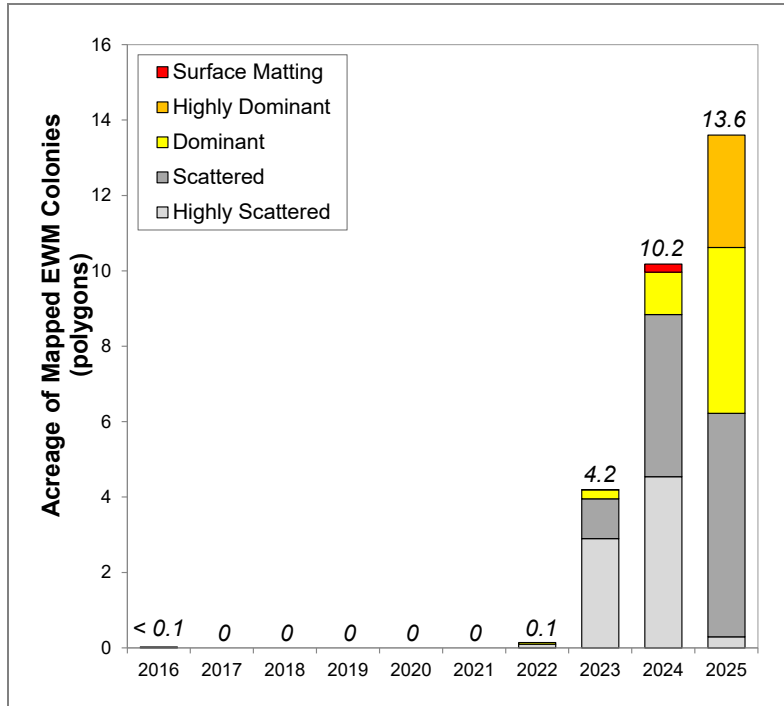
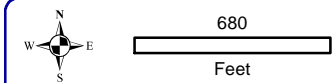
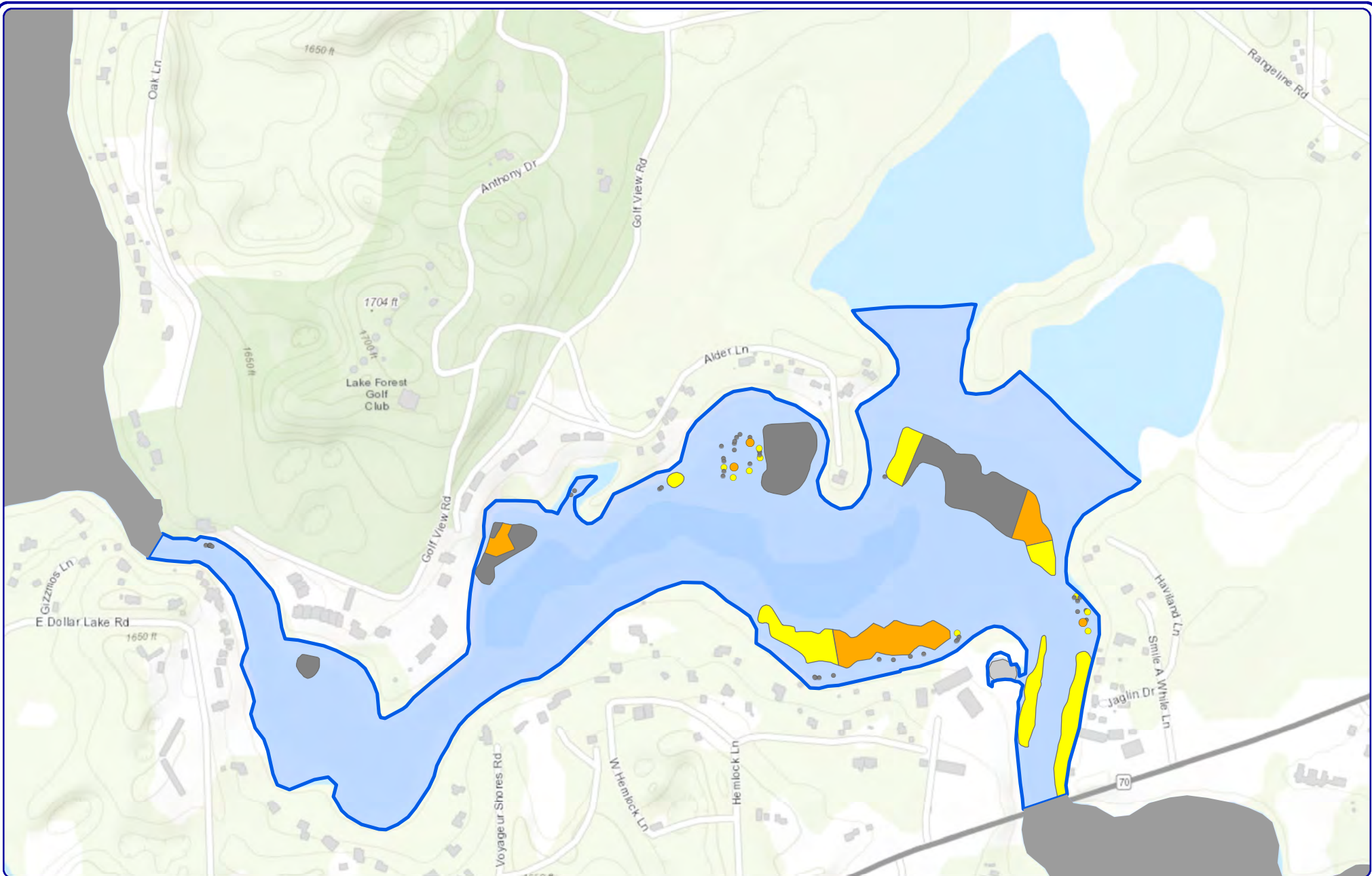


Figure 4.3-2. Voyageur Lake acreage of mapped EWM colonies during 2016-2025 Late Season EWM Mapping Surveys.

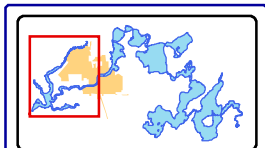
Early Season and Late Season Mapping Survey data were overlaid to analyze the colonization (>40 ft wide colonies) of EWM and how its distribution changed from early to late season in 2025. In Map 6, green areas indicate locations where EWM was detected only during the Early Season Survey and represent areas that retracted during the 2025 growing season. Yellow areas are locations where EWM was observed only during the late-season survey and represent areas where EWM colonies expanded in 2025. Pink areas highlight where EWM colonization was present in both surveys, indicating the areas of most prevalent colonization during the 2025 growing season. It is important to note that point-based mapping is not included in this map.

Map 6 shows several EWM colonies expanded and retracted from early to late season. Several of these areas transitioned from point-based occurrences in early season to polygon-sized colonies by the end of the season. Several colonies mapped during the Early Season Survey increased in size as they stretched over a longer section of shoreline. The east side of the lake contains the 2025 DASH location, which explains the reduction in colonized acreage in that area.



Onterra LLC
 Lake Management Planning
 815 Prosper Road
 De Pere, WI 54115
 920.338.8860
 www.onterra-eco.com

Sources:
 Basemap: ESRI AGOL
 Bathymetry: WDNR, Onterra digitized
 Aquatic Plant Survey: Onterra, 2025
 Map Date: October 24, 2025 - EJJ



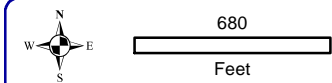
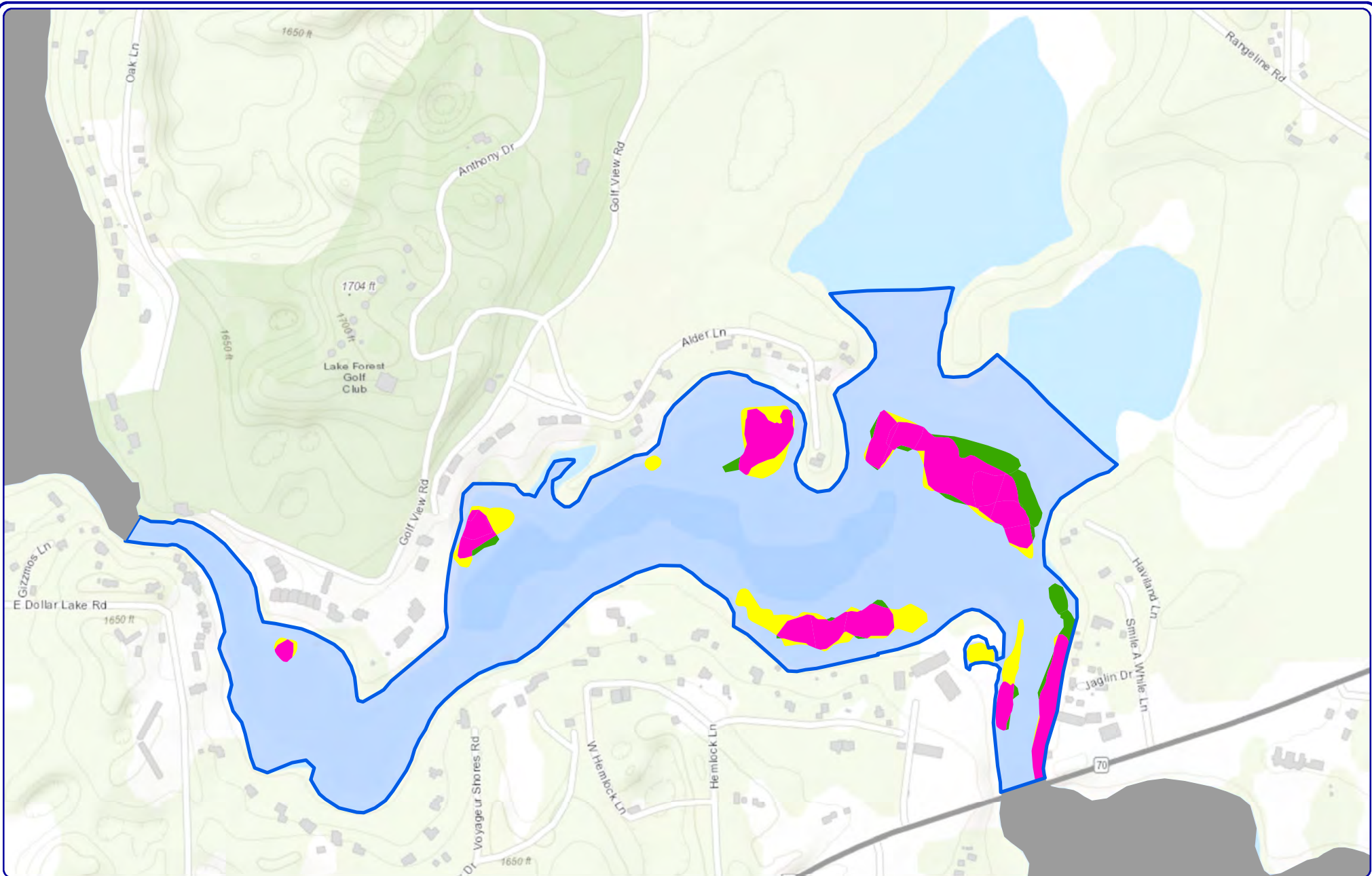
Extent of large map shown in red.

Legend

EWM Survey Results (September 16-18, 2025)

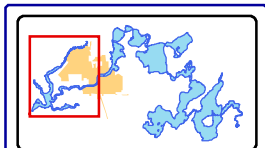
- Highly Scattered
- Scattered
- Dominant
- Highly Dominant
- Surface Matting
- Single or Few Plants
- Clumps of Plants
- Small Plant Colony

Map 5
Voyageur Lake
 Vilas County, Wisconsin
Late-Season 2025
EWM Survey Results



Onterra LLC
 Lake Management Planning
 815 Prosper Road
 De Pere, WI 54115
 920.338.8860
 www.onterra-eco.com




Sources:
 Basemap: ESRI AGOL
 Bathymetry: WDNR, Onterra digitized
 Aquatic Plant Survey: Onterra, 2025
 Map Date: April 4, 2026 - RMF



Extent of large map shown in red.

Legend

Colonized EWM in 2025 (>40 ft in diameter)

-  Early Season Only
-  Late Season Only
-  Both Early and Late Season

Map 6
Voyageur Lake
 Vilas County, Wisconsin
2025 Colonized EWM
Early to Late Season

4.4 Eagle Lake

The 2025 Late Season EWM Mapping Survey located EWM in relatively similar locations as delineated in 2024. A handful of point-based EWM occurrences were located along the eastern shore comingled with native northern watermilfoil populations. A dense colony of EWM (dominant) was located along the southwestern bay of the lake, but was relatively small in size (Map 7). The total colonized acreage of EWM in Eagle Lake continues to be low, with less than 1 acre being delineated since herbicide management ceased in 2016 (Figure 4.4-1).

Overall, the current EWM population in Eagle Lake is modest and is well below levels that are impacting navigation and recreational use. No areas are being considered for professional manual removal in 2026.

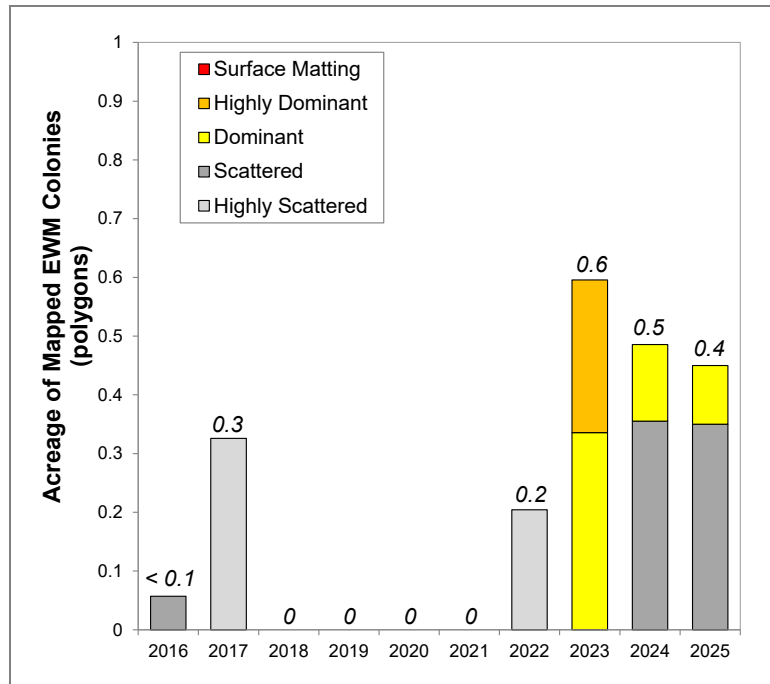
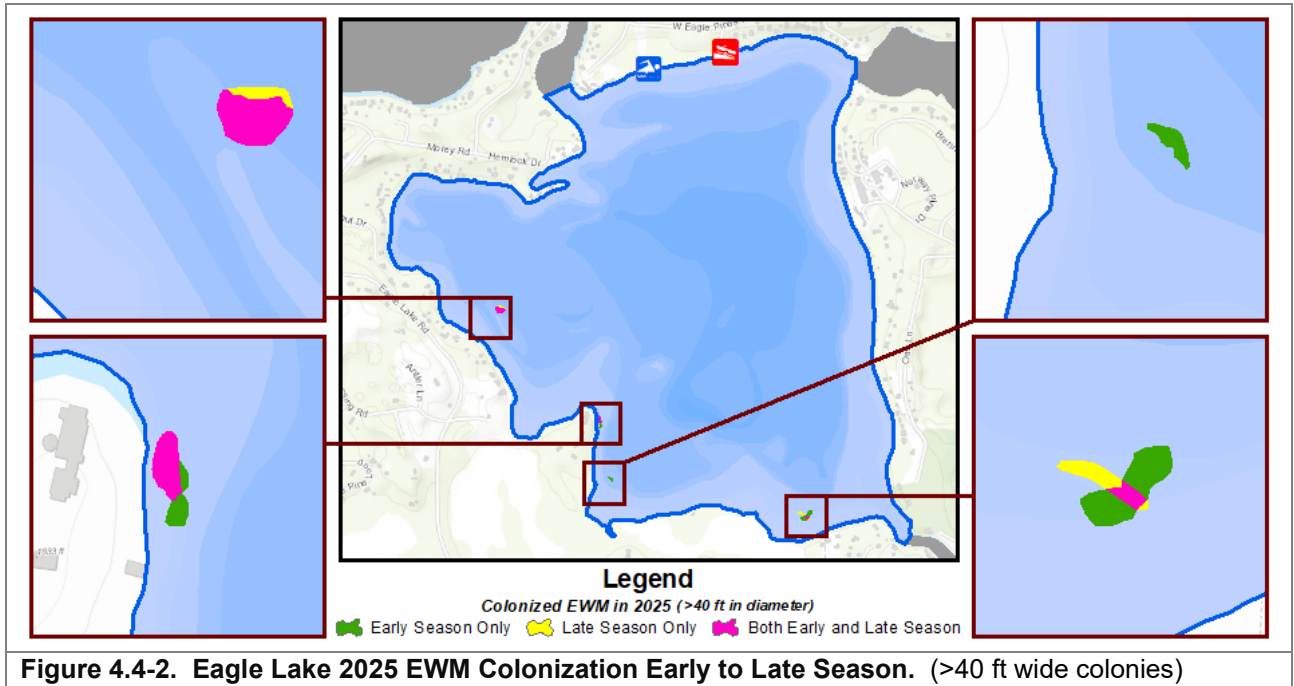
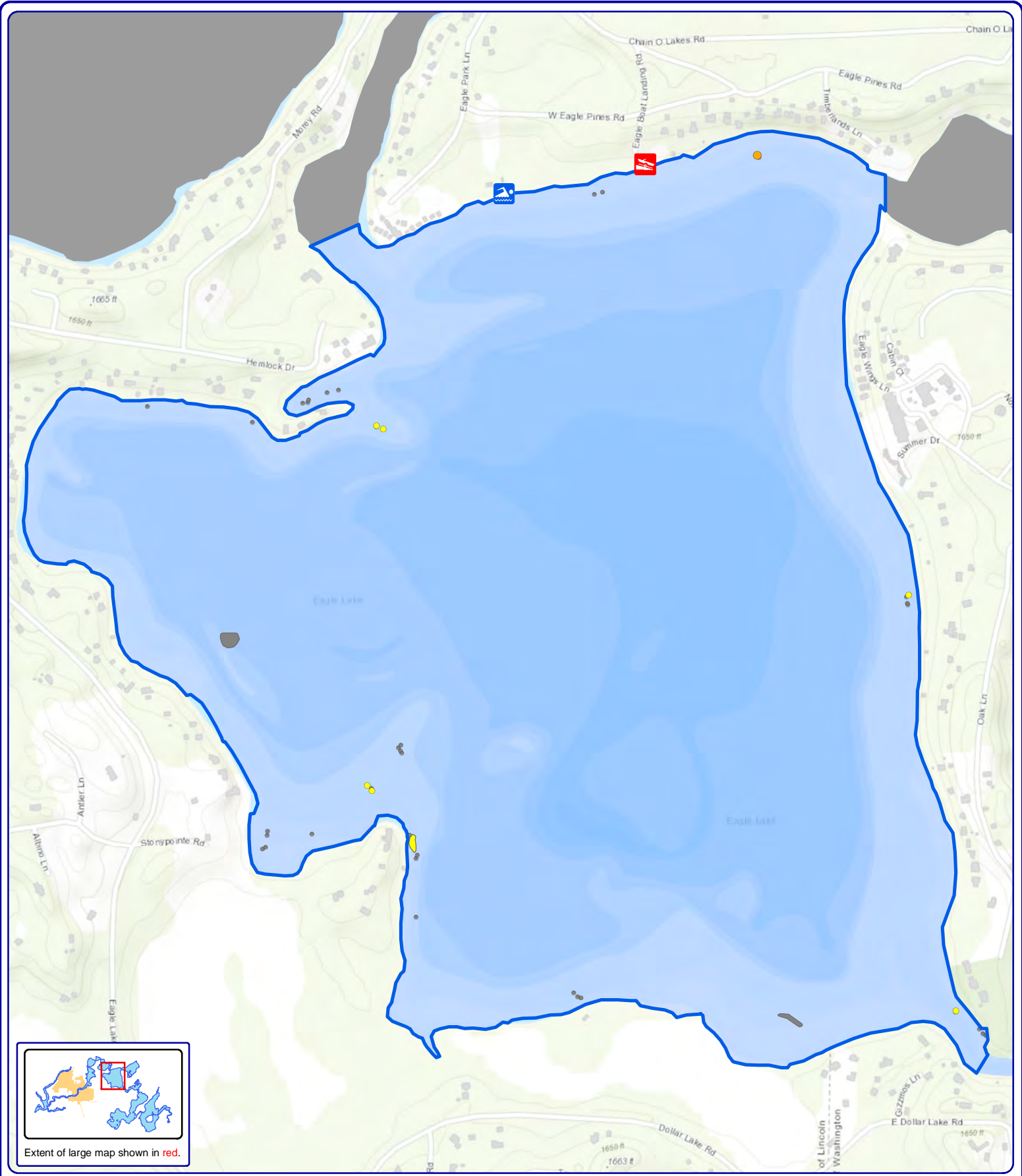


Figure 4.4-1. Eagle Lake acreage of mapped EWM colonies during 2016-2025 Late Season EWM Mapping Surveys.

Early Season and Late Season Mapping Survey data were overlaid to analyze the colonization (>40 ft wide colonies) of EWM and how its distribution changed from early to late season in 2025. In Figure 4.4-2, green areas indicate locations where EWM was detected only during the Early Season Survey and represent areas that retracted during the 2025 growing season. Yellow areas are locations where EWM was observed only during the late-season survey and represent areas where EWM colonies expanded in 2025. Pink areas highlight where EWM colonization was present in both surveys, indicating the areas of most prevalent colonization during the 2025 growing season. It is important to note that point-based mapping is not included in this map.


Figure 4.4-2 shows several small changes in size and extents of EWM colonies from early to late season including an additional colony on the southwest part of the lake, but overall, not much change was exhibited.



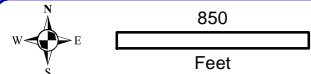


Legend

EWM Survey Results (September 16-18, 2025)

-  Highly Scattered
-  Scattered
-  Dominant
-  Highly Dominant
-  Surface Matting
-  Single or Few Plants
-  Clumps of Plants
-  Small Plant Colony

Map 7
Eagle Lake
 Vilas County, Wisconsin
Late-Season 2025
EWM Survey Results



Onterra LLC
 Lake Management Planning
 815 Prosper Road
 De Pere, WI 54115
 920.338.8860
 www.onterra-eco.com

Sources:
 Basemap: ESRI AGOL
 Bathymetry: WDNR, Onterra digitized
 Aquatic Plant Survey: Onterra, 2025
 Map Date: October 24, 2025 - EJH

4.5 Scattering Rice Lake

At the start of the project in 2007, Scattering Rice contained one of the largest EWM populations in the chain, exceeding 50 acres of dense EWM. Through a series of aggressive and whole-lake herbicide management, the EWM population was greatly reduced. This lake also has unique water quality aspects compared to other lakes in the chain, being driven solely by the Deerskin River watershed. Therefore, the water clarity conditions that generally dictate the amount of aquatic plants in the rest of the chain are more complex in Scattering Rice Lake.

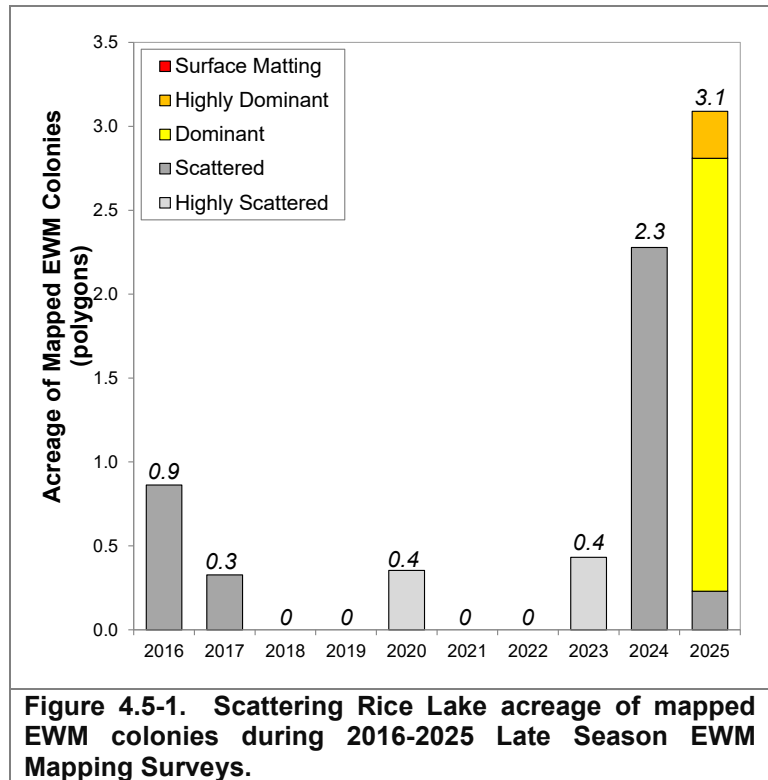
The EWM population of Scattering Rice Lake has remained low over the past decade. Only low-density EWM colonies (*highly scattered* or *scattered*) have been located in the lake since herbicide management ceased.

However, higher density EWM colonies (*dominant* or *high dominant*) were mapped in 2025. The amount of colonized acreage increased to 3.1 acres in 2025, as EWM mapped in these footprints slightly increased in density from those previously marked with low-density EWM colonies (Figure 4.5-1). The colonized EWM was largely located in two areas of Scattering Rice Lake: 1) in the northeast corner of the lake and 2) just east and lakeward of the bog island. A few additional clusters of EWM mapped with point-based methods were located along the eastern shore near Scattering Rice Rd, as well as the northeast shoreline (Map 8).

No areas are being considered for professional manual removal in 2026.

Early Season and Late Season Mapping Survey data were overlaid to analyze the colonization (>40 ft wide colonies) of EWM and how its distribution changed from early to late season in 2025. In Figure 4.5-2, green areas indicate locations where EWM was detected only during the Early Season Survey and represent areas that retracted during the 2025 growing season. Yellow areas are locations where EWM was observed only during the late-season survey and represent areas where EWM colonies expanded in 2025. Pink areas highlight where EWM colonization was present in both surveys, indicating the areas of most prevalent colonization during the 2025 growing season. It is important to note that point-based mapping is not included in this map.

Figure 4.5-2 shows several changes in size and extents of EWM colonies from early to late season. All three EWM colonies observed in 2025 in Scattering Rice Lake were observed during both Early and Late Season Mapping Surveys. The colony between the two islands was observed during both the early and late season surveys and showed a slight increase in the late season survey. The largest change in the lake was a reduction on the shallow side of the colony on the eastern bay of the lake.



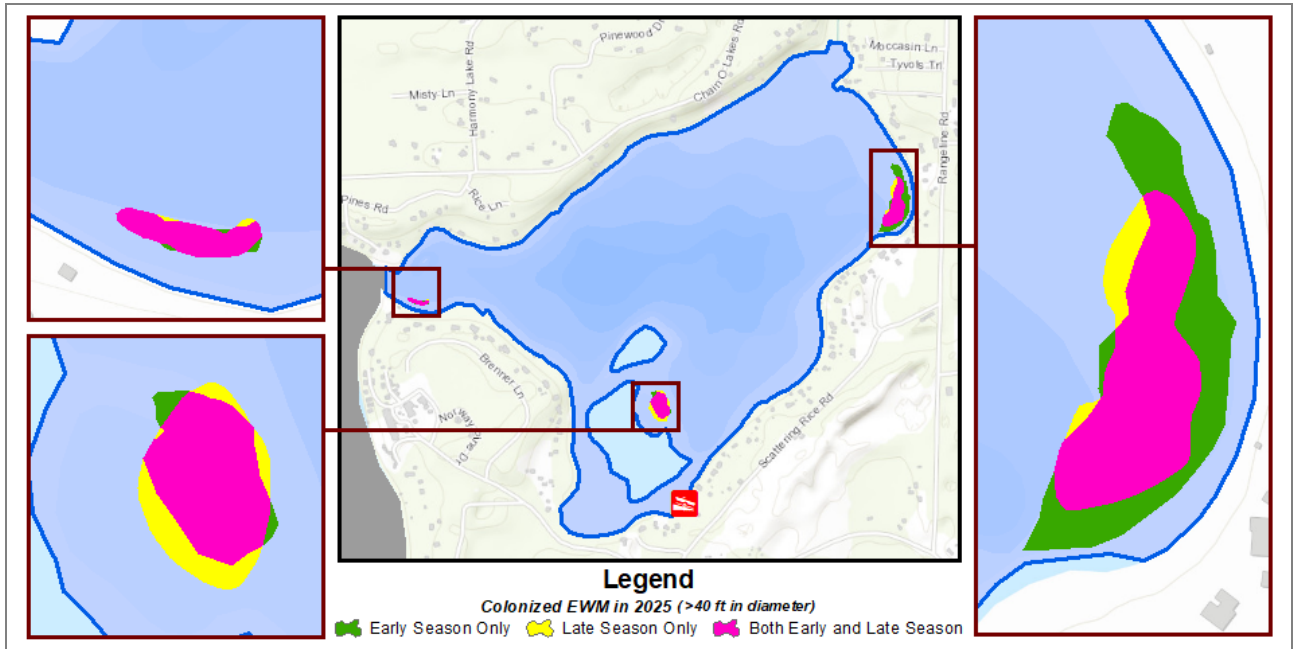
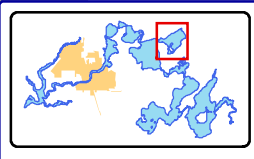
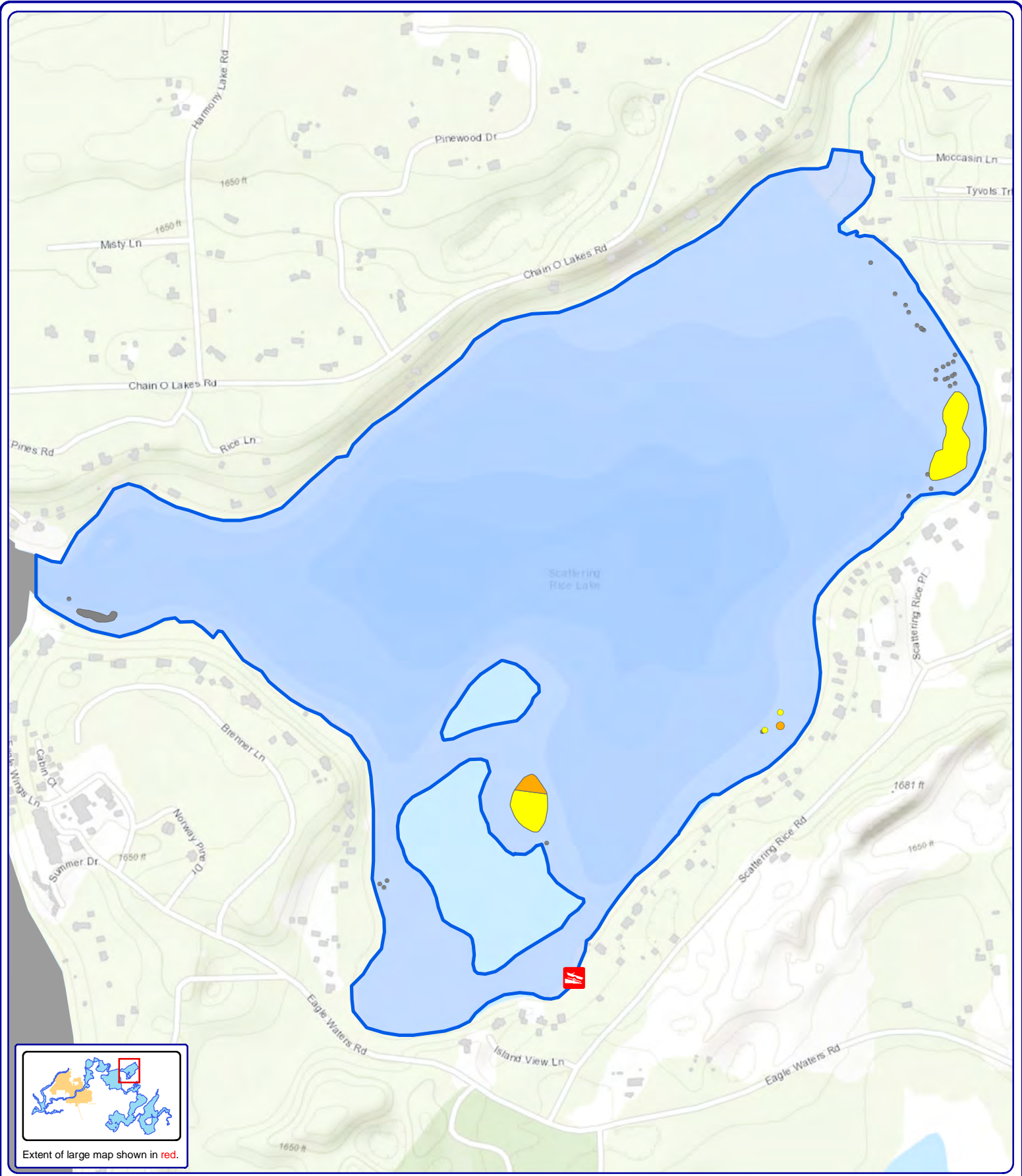
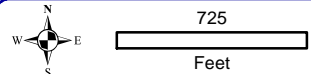


Figure 4.5-2. Scattering Rice Lake 2025 EWM Colonization Early to Late Season. (>40 ft wide colonies)



Extent of large map shown in red.



Onterra LLC
 Lake Management Planning
 815 Prosper Road
 De Pere, WI 54115
 920.338.8860
 www.onterra-eco.com

Sources:
 Basemap: ESRI AGOL
 Bathymetry: WDNR, Onterra digitized
 Aquatic Plant Survey: Onterra, 2025
 Map Date: October 24, 2025 - EJH

Legend

- EWM Survey Results (September 16-18, 2025)**
- Highly Scattered
 - Scattered
 - Dominant
 - Highly Dominant
 - Surface Matting
 - Single or Few Plants
 - Clumps of Plants
 - Small Plant Colony

Map 8
Scattering Rice Lake
 Vilas County, Wisconsin
Late-Season 2025
EWM Survey Results

4.6 Otter Lake

Only a small number of EWM plants were located in Otter Lake during the 2025 Late Season EWM Mapping Survey, none of which were marked with polygon-based mapping methods (Map 9). The 2023 Late Season EWM Mapping Survey located 1.0 acres of colonized EWM, of which most of that acreage occurred in the channel between Eagle and Otter Lakes. Colonized EWM was also located in this footprint during the 2024 Early Season EWM Mapping Survey, but at lower densities than the prior survey. When this area was mapped during the 2024 Late Season EWM Mapping Survey, only point-based methods were applied, indicating a continual decline in the population in this area. During the Late-Season EWM Mapping Survey, no EWM was found within this channel, indicating further continued decline in the population in this area. Only point-based EWM occurrences were marked during 2025 (Figure 4.6-1).

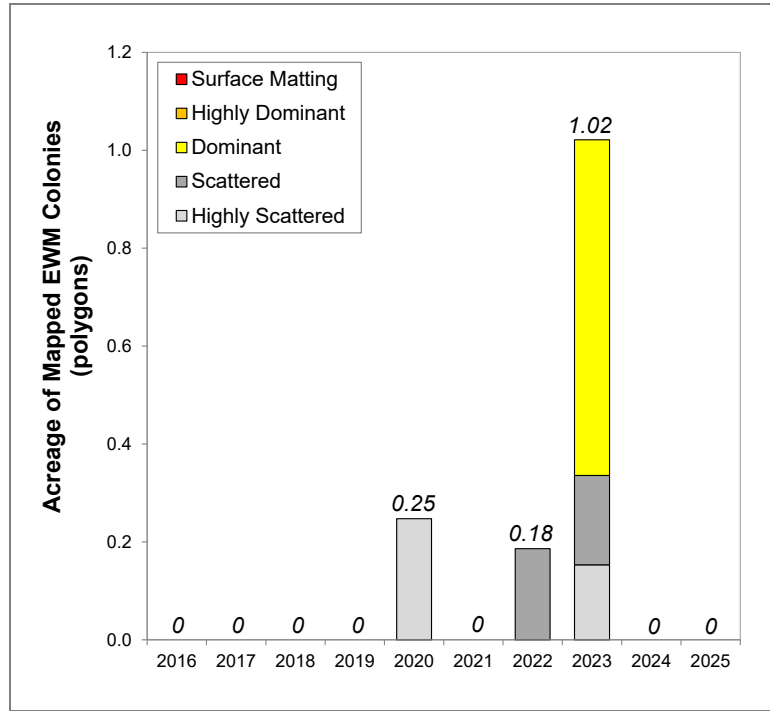


Figure 4.6-1. Otter Lake acreage of mapped EWM colonies during 2016-2025 Late Season EWM Mapping Surveys.

One polygon sized colony (>40 ft wide) was mapped during the Early-Season EWM Mapping Survey but was not found during the late-season mapping survey (Figure 4.6-2). There was no point-based EWM data taken on the late season survey in this area.

No areas are being considered for professional manual removal in 2026

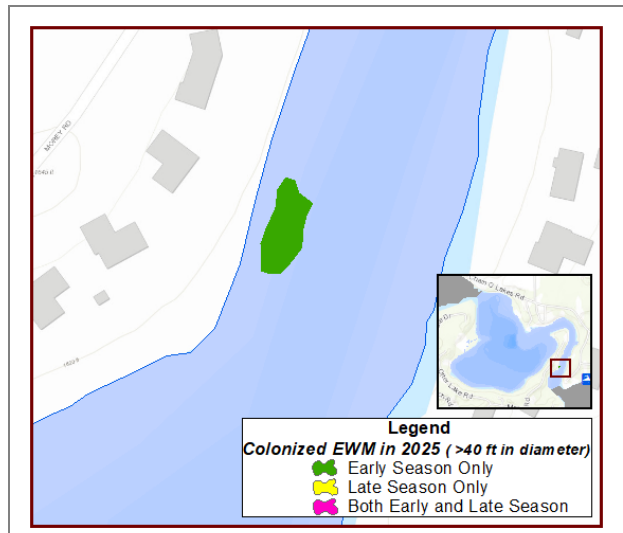
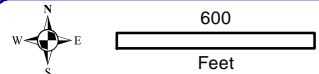
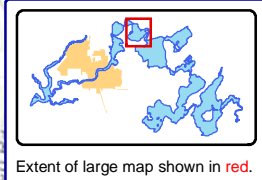
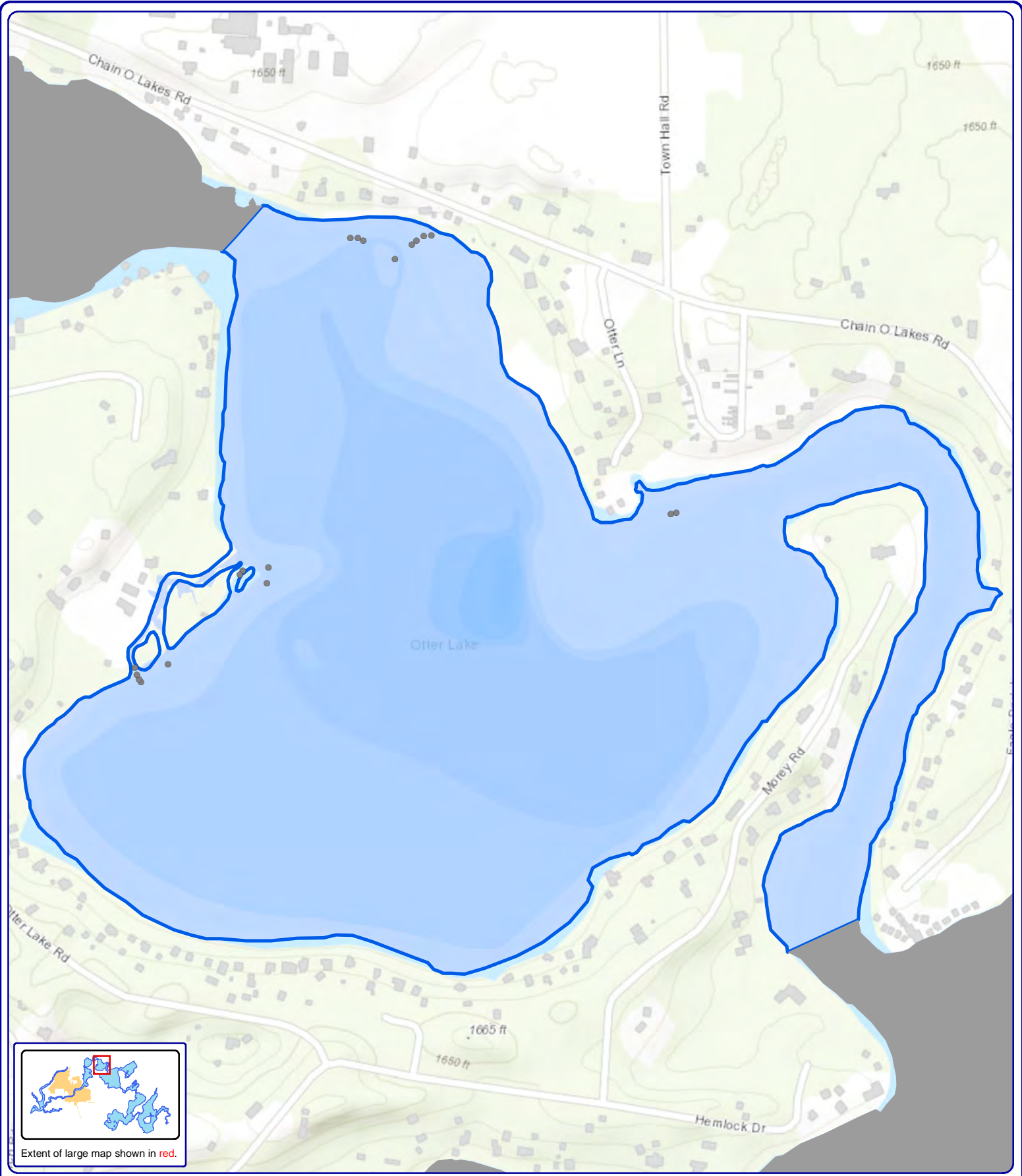


Figure 4.6-2. Otter Lake 2025 EWM Colonization Early to Late Season. (>40 ft wide colonies). Green polygons were only found on Early Season EWM Mapping Survey.



Onterra LLC
 Lake Management Planning
 815 Prosper Road
 De Pere, WI 54115
 920.338.8860
 www.onterra-eco.com

Sources:
 Basemap: ESRI AGOL
 Bathymetry: WDNR, Onterra digitized
 Aquatic Plant Survey: Onterra, 2025
 Map Date: October 24, 2025 - EJH

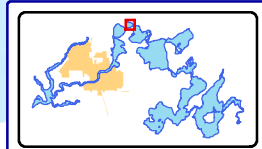
Legend

- EWM Survey Results (September 16-18, 2025)**
- Highly Scattered
 - Clumps of Plants
 - Highly Dominant
 - Surface Matting
 - Single or Few Plants
 - Clumps of Plants
 - Small Plant Colony

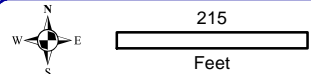
Map 9
 Otter Lake
 Vilas County, Wisconsin
Late-Season 2025
EWM Survey Results

4.7 Lynx Lake

Only a small number of EWM plants were located in Lynx Lake during the 2025 Early and Late Season EWM Mapping Surveys, none of which were marked with polygon-based mapping methods (Map 10). The highest concentration of EWM plants was located near the boat landing off of Chain O' Lakes Rd. The EWM in this area was slightly denser during the 2025 Early Season EWM Mapping Survey. Since 2016, no colonized EWM has been mapped in Lynx Lake during the Late Season EWM Mapping Surveys. No areas are being considered for professional manual removal in 2026.



Extent of large map shown in red.



Onterra LLC
 Lake Management Planning
 815 Prosper Road
 De Pere, WI 54115
 920.338.8860
 www.onterra-eco.com

Sources:
 Basemap: ESRI AGOL
 Bathymetry: WDNR, Onterra digitized
 Aquatic Plant Survey: Onterra, 2025
 Map Date: October 24, 2025 - EJH

- Legend**
- EWM Survey Results (September 16-18, 2025)**
- Highly Scattered
 - Single or Few Plants
 - Scattered
 - Clumps of Plants
 - Dominant
 - Small Plant Colony
 - Highly Dominant
 - Surface Matting

Map 10
 Lynx Lake
 Vilas County, Wisconsin
Late-Season 2025
EWM Survey Results

4.8 Duck Lake

The 2025 Late Season EWM Mapping Survey located EWM in a few nearshore areas of Duck Lake (Map 11). The 2024 Late Season EWM Mapping Survey located 0.3 acres of colonized EWM, of which all of the acreage occurred along the west shoreline. EWM was again found in this same footprint during the 2025 Late Season EWM Mapping Survey, but with another small colony farther up the shoreline to the north. The EWM that was located during the 2025 Late Season EWM Mapping Survey included one dense pocket of *dominant* density EWM (Figure 4.8-1). *Single or few* EWM occurrences were located along many parts of the shorelines of Duck Lake during the 2025 Late Season EWM Mapping Survey, as well as several *clumps of plants* occurrences.

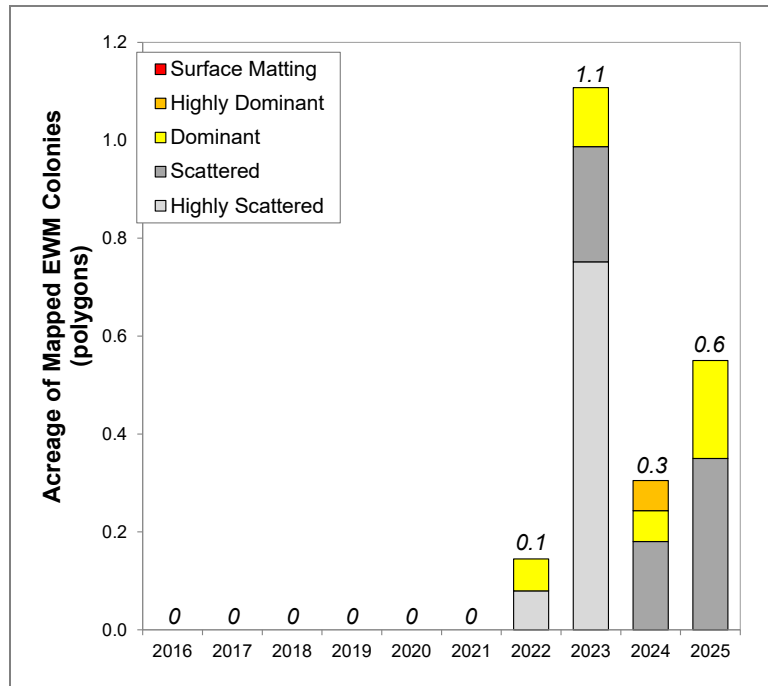


Figure 4.8-1. Duck Lake acreage of mapped EWM colonies during 2016-2025 Late Season EWM Mapping Surveys.

Early Season and Late Season Mapping Survey data were overlaid to analyze the colonization (>40 ft wide colonies) of EWM and how its distribution changed from early to late season in 2025. In Figure 4.8-2, green areas indicate locations where EWM was detected only during the Early Season Survey and represent areas that retracted during the 2025 growing season. Yellow areas are locations where EWM was observed only during the late-season survey and represent areas where EWM colonies expanded in 2025. Pink areas highlight where EWM colonization was present in both surveys, indicating the areas of most prevalent colonization during the 2025 growing season. It is important to note that point-based mapping is not included in this map.

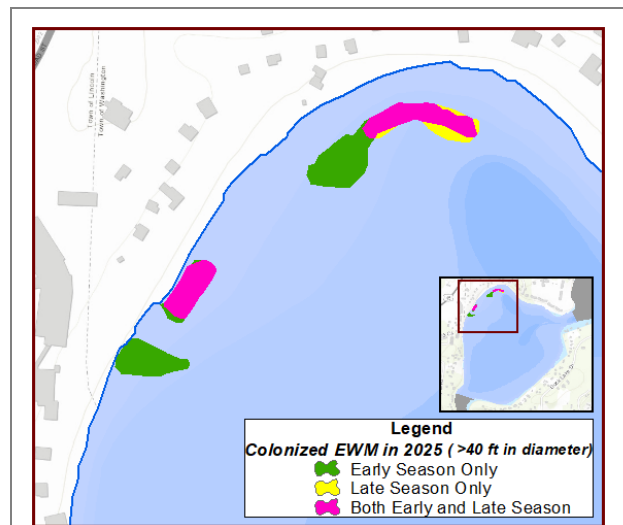
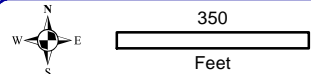
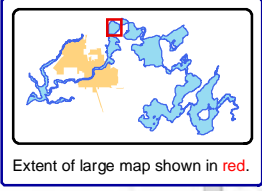
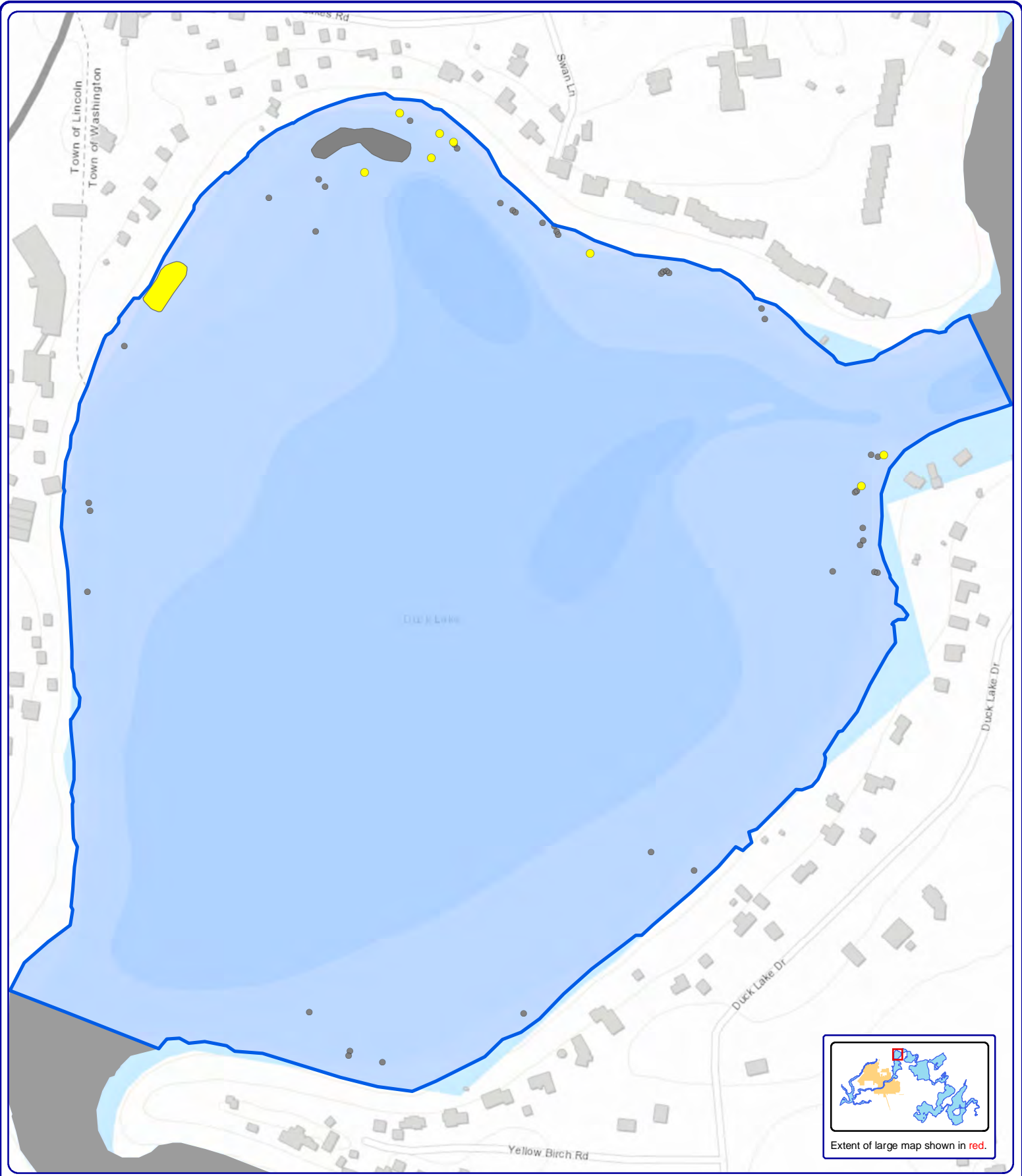


Figure 4.8-2. Duck Lake 2025 EWM Colonization Early to Late Season. (>40 ft wide colonies)

Figure 4.8-2 shows several changes in size and extents of EWM colonies from early to late season.

During the Early Season Survey, EWM exhibited a larger colonized area than in the Late Season Survey representing a reduction through the summer. Only a few single points of EWM were mapped during the Late Season surveys where those reductions were.

No areas are being considered for professional manual removal in 2026.



Onterra LLC
 Lake Management Planning
 815 Prosper Road
 De Pere, WI 54115
 920.338.8860
 www.onterra-eco.com

Sources:
 Basemap: ESRI AGOL
 Bathymetry: WDNR, Onterra digitized
 Aquatic Plant Survey: Onterra, 2025
 Map Date: October 24, 2025 - EJH

Legend

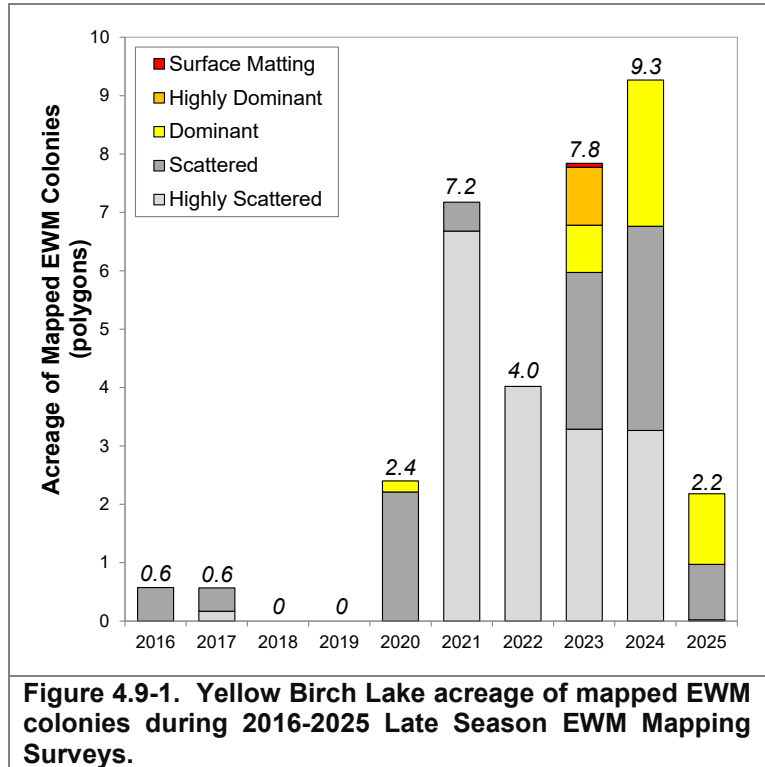
- EWM Survey Results (September 16-18, 2025)**
- Highly Scattered
 - Scattered
 - Dominant
 - Highly Dominant
 - Surface Matting
 - Single or Few Plants
 - Clumps of Plants
 - Small Plant Colony

Map 11
 Duck Lake
 Vilas County, Wisconsin
Late-Season 2025
EWM Survey Results

4.9 Yellow Birch Lake

Many *single plants*, several *clumps of plants*, two *small plant colonies*, and two *scattered/dominant colonies* lined the sides of the river channel south of what many folks consider to be Yellow Birch Lake, proper. The current EWM population is fairly confined to nearshore areas of this channel and is outside of the traditional navigation path used by boaters to get between Yellow Birch and Watersmeet Lakes.

The 2025 Late Season EWM Mapping Survey located a slight decrease in EWM acreage compared to previous years, with the 2025 acreage (2.2 acres) being almost even split between *scattered* and *dominant* density EWM (Figure 4.9-1). If EWM mapped with point-based methods in areas of Yellow Birch Lake slightly increases in density to levels better mapped with polygon-based methods, the colonized acreage may show large increases in future years. Considering the 2025 conditions were extremely favorable for EWM growth on some lakes in the chain, the potential for variability and even decreases in EWM densities in future less favorable years is high. Map 12 shows the Late Season EWM Mapping Survey results.



No areas are being considered for professional manual removal in 2026.

Early Season and Late Season Mapping Survey data were overlaid to analyze the colonization (>40 ft wide colonies) of EWM and how its distribution changed from early to late season in 2025. Figure 4.9-2 shows that the three areas of EWM colonization found during the Early-Season Survey were also present during the Late Season Survey showing that these areas were present for most of the growing season.

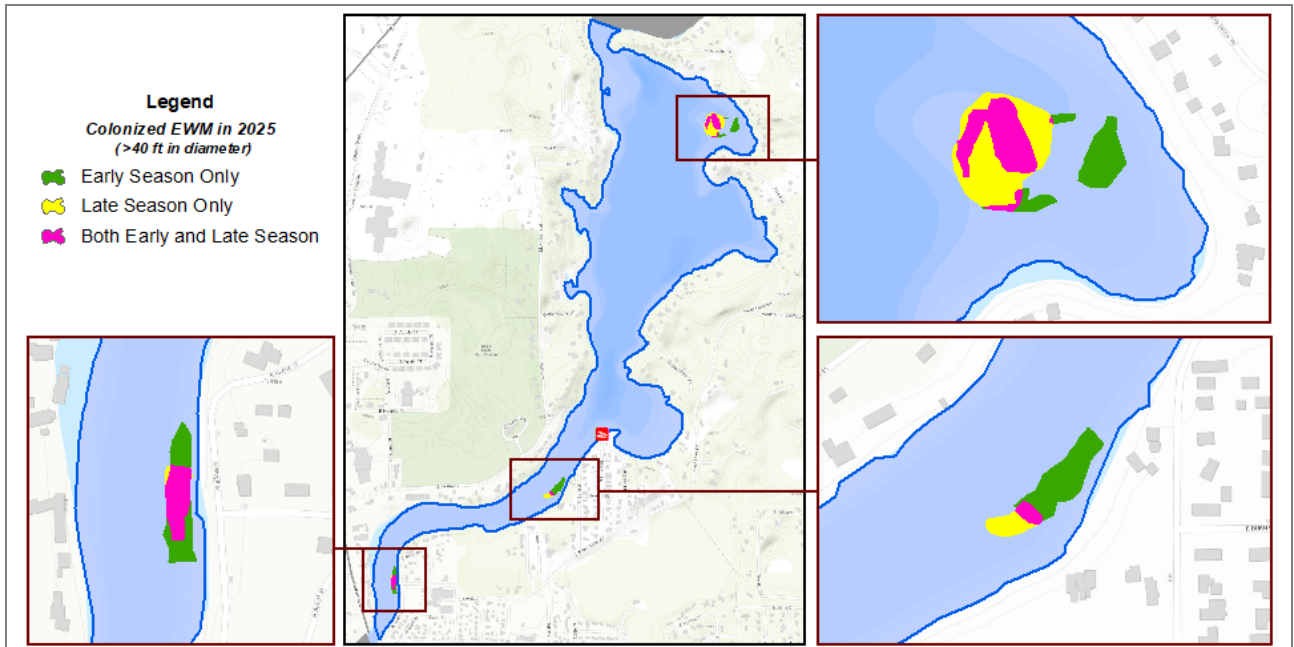
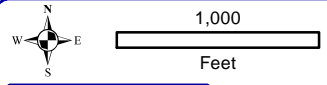
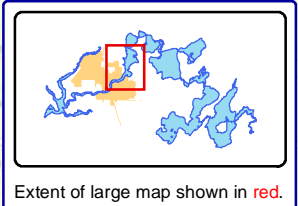
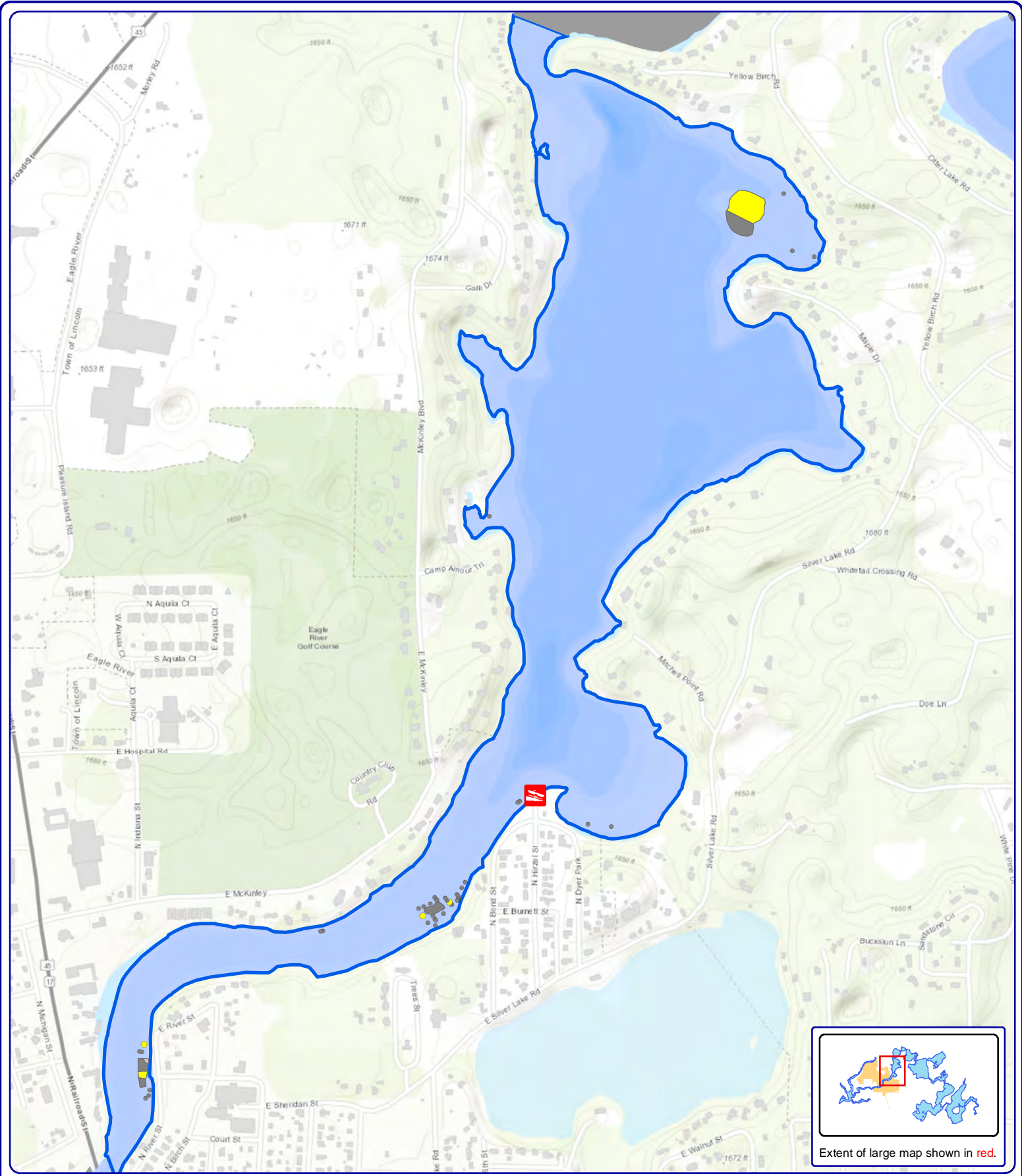


Figure 4.4-1. Yellow Birch Lake 2025 EWM Colonization Early to Late Season. (>40 ft wide colonies)



Onterra LLC
 Lake Management Planning
 815 Prosper Road
 De Pere, WI 54115
 920.338.8860
 www.onterra-eco.com

Sources:
 Basemap: ESRI AGOL
 Bathymetry: WDNR, Onterra digitized
 Aquatic Plant Survey: Onterra, 2025
 Map Date: October 24, 2025 - EJJ

Legend

- EWM Survey Results (September 16-18, 2025)**
- Highly Scattered
 - Scattered
 - Dominant
 - Highly Dominant
 - Surface Matting
 - Single or Few Plants
 - Clumps of Plants
 - Small Plant Colony

Map 12
Yellow Birch Lake
 Vilas County, Wisconsin
Late-Season 2025
EWM Survey Results

4.10 Watersmeet

The 2025 Late Season EWM Mapping Survey located EWM throughout the majority of littoral areas of Watersmeet Lake, including 24.6 acres of colonized EWM, the most observed since herbicide management ceased (Figure 4.10-1). Watersmeet Lake has consistently contained colonized EWM populations since 2016 and has been targeted for several years with professional manual removal efforts. The footprint of colonized EWM in Watersmeet has historically been in shallow areas adjacent to floating-leaf (i.e. water lilies) or emergent (i.e. wild rice, bur reed) communities. During 2025, isolated *dominant*, *highly dominant* and *surface matting* colonies were located in the upstream Wisconsin River and the upstream Rice Creek arms of the lake. EWM point-based occurrences and low to medium density colonized EWM was in the river channel that connects Watersmeet and Yellow Birch lakes. EWM was also located in some of the stumpy inside river bend areas to a greater extent as prior years (Map 13).

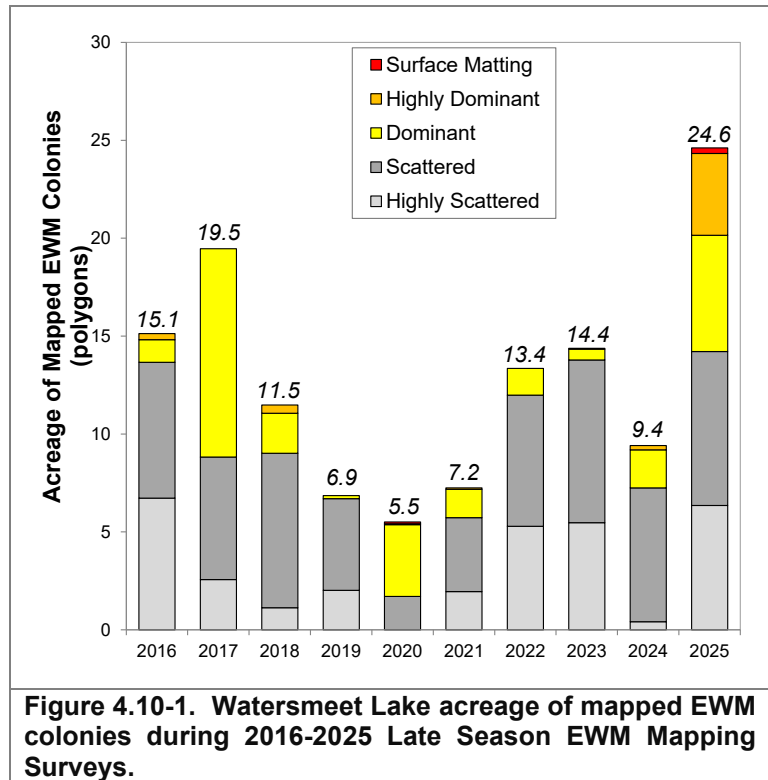
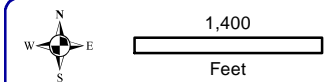
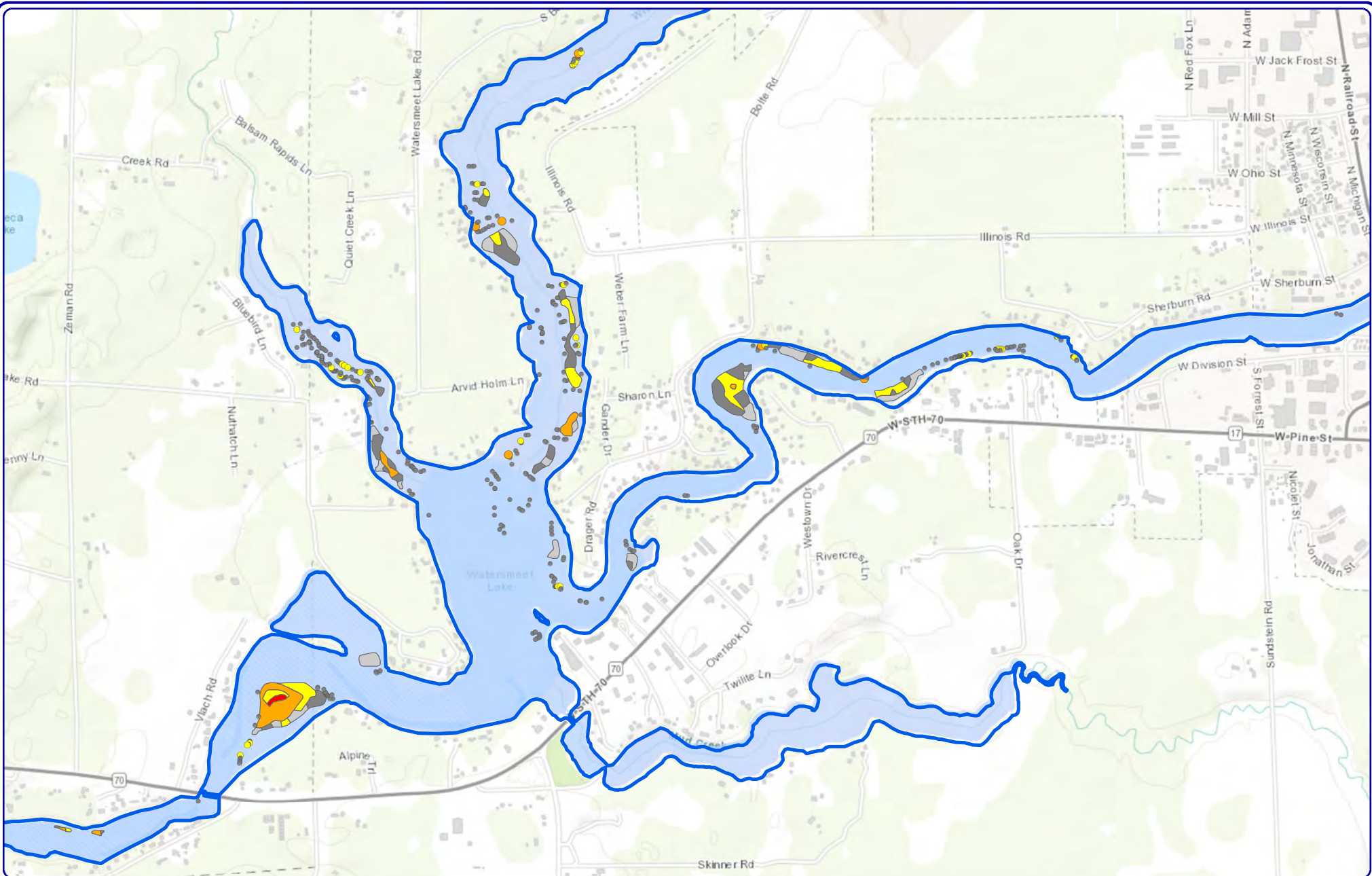


Figure 4.10-1. Watersmeet Lake acreage of mapped EWM colonies during 2016-2025 Late Season EWM Mapping Surveys.

No areas are being considered for professional manual removal in 2026

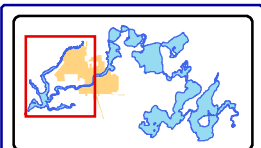
Early Season and Late Season Mapping Survey data were overlaid to analyze the colonization (>40 ft wide colonies) of EWM and how its distribution changed from early to late season in 2025. In Map 14, green areas indicate locations where EWM was detected only during the Early-Season Survey and represent areas that retracted during the 2025 growing season. Yellow areas are locations where EWM was observed only during the late-season survey and represent areas where EWM colonies expanded in 2025. Pink areas highlight where EWM colonization was present in both surveys, indicating the areas of most prevalent colonization during the 2025 growing season. It is important to note that point-based mapping is not included in this map.

Map 14 shows several EWM colonies expanded and retracted from early to late season. Several of these areas transitioned from point-based occurrences in early season to polygon-sized colonies by the end of the season. The most notable expansions occurred in the north and west channels, with smaller changes in the remaining channels. In contrast, a few areas showed reductions from early to late season but were limited to change from low-density polygons to point-based occurrences including the largest changes in the north channel. The largest colony in Watersmeet Lake was in the west channel and showed little change from early to late season representing a persistent EWM colony during the 2025 growing season.



Onterra LLC
 Lake Management Planning
 815 Prosper Road
 De Pere, WI 54115
 920.338.8860
 www.onterra-eco.com

Sources:
 Basemap: ESRI AGOL
 Bathymetry: WDNR, Onterra digitized
 Aquatic Plant Survey: Onterra, 2025
 Map Date: October 24, 2025 - EJJ

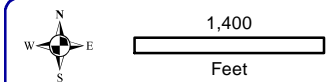
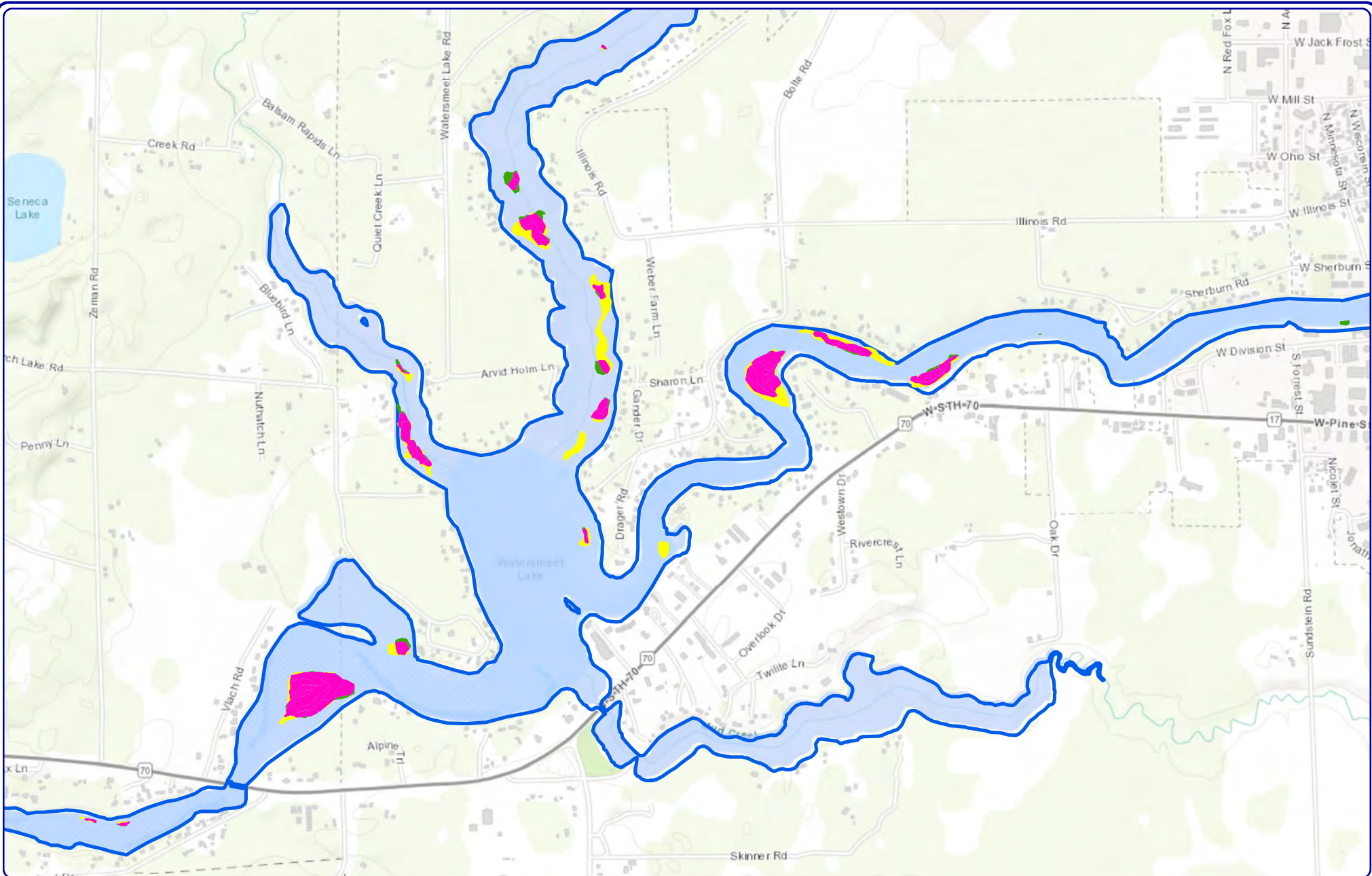


Extent of large map shown in red.

Legend

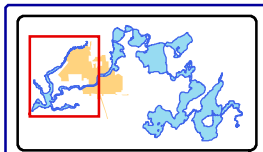
- EWM Survey Results (September 16-18, 2025)**
- Highly Scattered
 - Scattered
 - Dominant
 - Highly Dominant
 - Surface Matting
 - Single or Few Plants
 - Clumps of Plants
 - Small Plant Colony

Map 13
 Watersmeet Lake
 Vilas County, Wisconsin
Late-Season 2025
EWM Survey Results



Onterra LLC
 Lake Management Planning
 815 Prosper Road
 De Pere, WI 54115
 920.338.8860
 www.onterra-eco.com

Sources:
 Basemap: ESRI AGOL
 Bathymetry: WDNR, Onterra digitized
 Aquatic Plant Survey: Onterra, 2025
 Map Date: April 4, 2026 - RMF



Extent of large map shown in red.

Legend

Colonized EWM in 2025 (>40 ft in diameter)

- Early Season Only
- Late Season Only
- Both Early and Late Season

Map 14

Watersmeet Lake

Vilas County, Wisconsin

**2025 Colonized EWM
 Early to Late Season**